

# MarkMagic9 and JMagic9 Installation Instructions

**Version 9 Release 5**

**Modification Level: 181229**



# MarkMagic

Support : 914-963-6600 Option 4 • Fax: 716-712-0666 •  
[help@CYBRA.com](mailto:help@CYBRA.com)



**We identify with success.**

<b>A.</b>	<b>INSTALLATION / UPGRADE ROADMAP .....</b>	<b>- 3 -</b>
1.	INSTALLATION / UPGRADE ROADMAP .....	- 4 -
<b>B.</b>	<b>INTRODUCTION TO MARKMAGIC 9 .....</b>	<b>- 5 -</b>
1.	INSTALLATION TERMS .....	- 5 -
2.	WHAT'S NEW IN MARKMAGIC 9 .....	- 6 -
3.	WHAT'S NEW IN J MAGIC 9 .....	- 6 -
4.	ENHANCEMENTS AND FIXES IN MOD LVL 18 12 29 .....	Error! Bookmark not defined.
5.	MARKMAGIC ADD-ON OPTIONS .....	- 8 -
6.	VERSION HISTORY .....	- 10 -
7.	LICENSE INFORMATION.....	- 10 -
8.	MIRRORING INFORMATION OVERVIEW .....	- 11 -
<b>C.</b>	<b>DOWNLOAD INSTRUCTIONS – NEW INSTALLATION.....</b>	<b>- 13 -</b>
1.	BEFORE YOU BEGIN .....	- 13 -
2.	INSTALLATION .....	- 15 -
3.	TROUBLESHOOTING.....	- 17 -
<b>D.</b>	<b>DOWNLOAD INSTRUCTIONS - UPGRADE.....</b>	<b>- 19 -</b>
1.	BEFORE YOU BEGIN .....	- 19 -
2.	INSTALLATION .....	- 22 -
3.	TROUBLESHOOTING.....	- 26 -
<b>E.</b>	<b>J MAGIC INSTALLATION .....</b>	<b>- 27 -</b>
1.	BEFORE YOU BEGIN .....	- 27 -
2.	INSTALLATION .....	- 27 -
3.	5250 Web Help installation .....	- 28 -

**IMPORTANT INFORMATION FOR 4.1, 5.1, 6.1, 6.5, 7.2 and 7.7 USERS  
(PLEASE READ BEFORE UPGRADING TO MARKMAGIC 9)**

Users upgrading from version 4.1, 5.1, 6.1/6.5 (mod level 080620 or earlier) **must** upgrade to version 6.5 Mod Level 081219, then upgrade V6.5 to Version 8.6 Mod 131005 and then, finally, upgrade 8.6 to 9.5 Mod 181229. Please see MarkMagic 6 install guide and MarkMagic 8 install guide for details.

Users upgrading from version 6.1/6.5 mod level 081219, 7.2, 7.7 mod level 101216 or earlier, to version 9 **must** upgrade to Version 8.6 mod 131005 before upgrading to 9.5 Mod 181229.

MarkMagic versions 8.6 and earlier are **\*not\*** compatible with IBM OS 7R3. If your system is running or will be upgraded to IBM OS V7R3 in the future, please upgrade to MarkMagic 9 as soon as possible.

Note1: The MarkMagic 9 upgrade procedure will automatically cancel if the user attempts to upgrade from an unsupported version.

## A. INSTALLATION / UPGRADE ROADMAP

To find your System i OS version enter the following command: DSPPTF  
To determine your current MarkMagic version and mod level (if MarkMagic is currently installed), start MarkMagic (STRMRKMAG), press F9 for a command line, and type the following command: SETMMPRM

MarkMagic 9 is compatible with IBM's operating systems "V6R1M0" and above. *NOTE:* IBM released V6R1M0 in 2008.

- MarkMagic 9 also requires PASE "Portable App Solutions Environment" Licensed Program: 5761SS1 & JAVA 6 Licensed Program: 5761JV1. *Note:* It is highly unlikely your System i does not already have these IBM licenses installed.

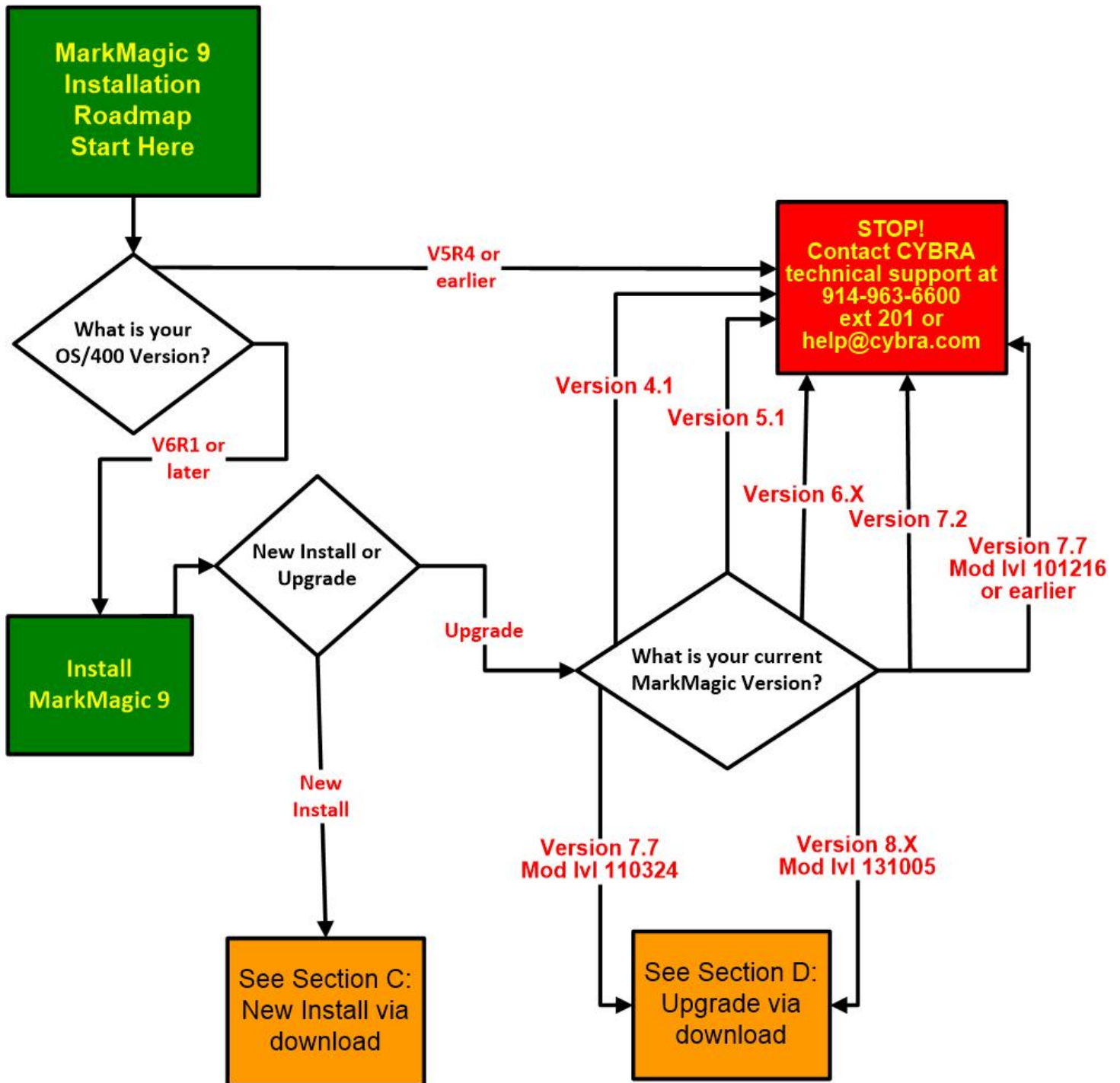
If your system is using an older OS level (V5R4M0 or below), please contact your account manager or support representative to help determine the best MarkMagic version that can be successfully installed on your system's OS level.

J Magic version 9 mod level 18 12 29 is compatible with MarkMagic 9 18 12 29.

*NOTE:* If multiple versions of MarkMagic are installed on your system, please see *Upgrade Notes* in section D for important details.

*NOTE:* A MarkMagic installation cannot be performed if an independent auxiliary storage pools (ASP) is accessible. Tip: Remove all independent ASPs from your job by issuing the SETASPGRP (Set ASP Group) command and specify \*NONE for the ASP Group parameter.

## 1. INSTALLATION / UPGRADE ROADMAP



## B. INTRODUCTION TO MARKMAGIC 9

Enclosed is the latest modification level of CYBRA's MarkMagic 9 Bar Code Labels, RFID Tags, and Electronic Forms Software for the IBM System i featuring our J Magic 9 Client —the world's only WYSIWYG label and forms designer written in Java.

MarkMagic installation files and documentation are available via download from the CYBRA website [www.CYBRA.com](http://www.CYBRA.com)

### 1. INSTALLATION TERMS

---

Install —An Install is a new installation of MarkMagic 9.

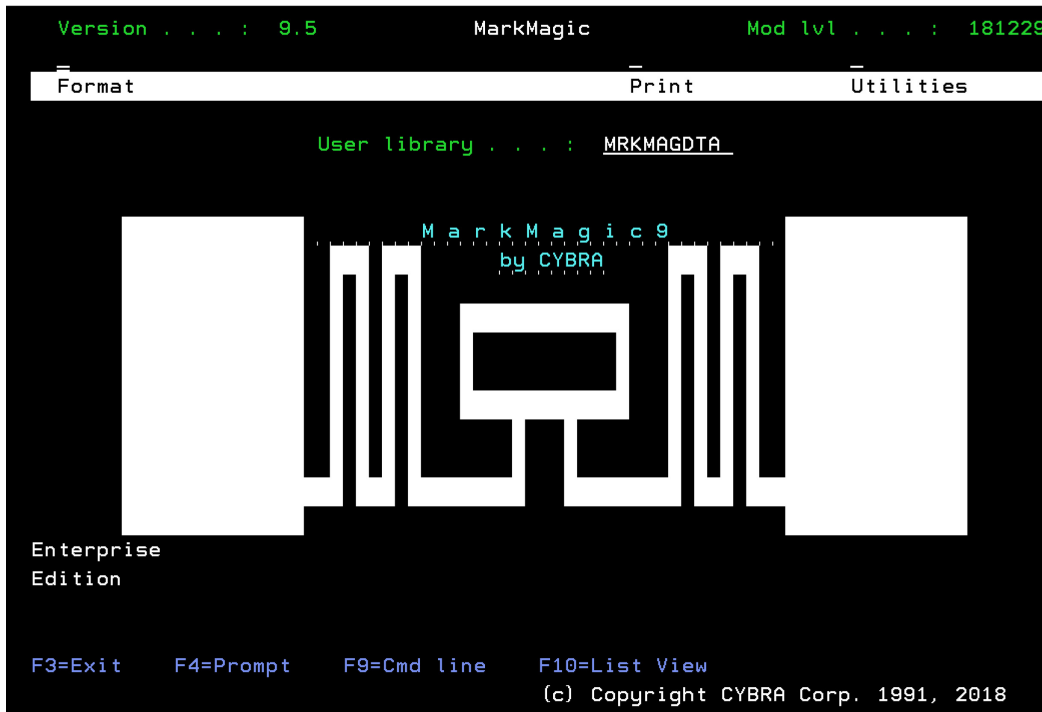
Upgrade —An Upgrade is a move from version to version; for example, if you are an existing customer on MarkMagic Version 7.7 or 8.6 and you wish to install MarkMagic 9.

Update —An Update is a move from one Mod level to a later Modification level of MarkMagic (Example: updating/replacing 9.0 Mod Level 16 10 15 with 9.5 Mod Level 18 12 29).

You must be at OS/400 V6R1M0 or later and have PASE and JAVA 6 installed to download and install MarkMagic 9 from the web. If using OS/400 V5R4 or earlier, please contact [help@CYBRA.com](mailto:help@CYBRA.com). To download MarkMagic 9, visit <http://cybra.com/my-downloads/> and log in.

## 2. WHAT'S NEW IN MARKMAGIC 9

Award-winning MarkMagic™ 9 is the easiest and fastest way to design and print the bar code labels, electronic forms, ad hoc reports, and RFID tags you need to communicate with your customers and suppliers. The culmination of years of innovative software engineering, new MarkMagic 9 is a total document development solution with features and capabilities not found in any other product on the market.

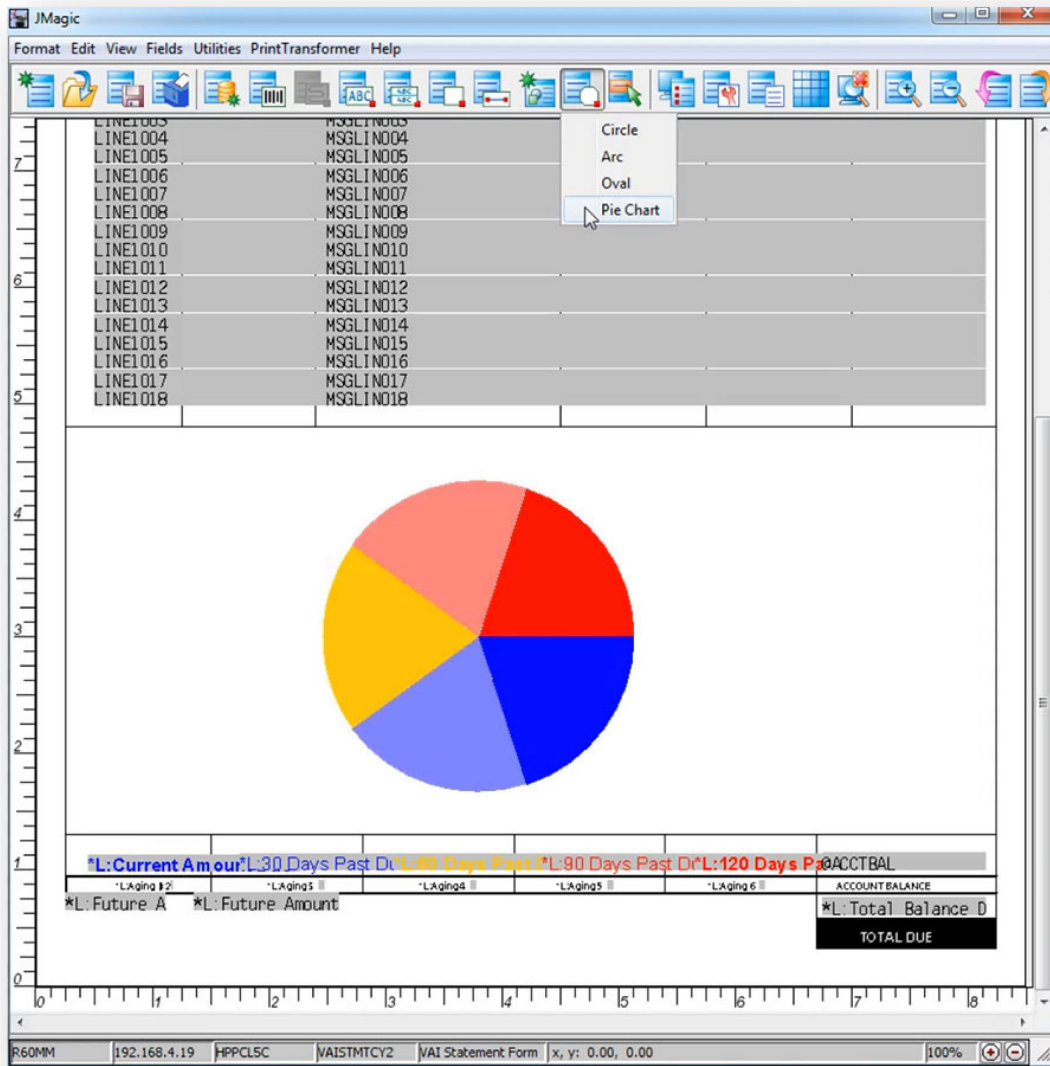


What's so "Fine" about MarkMagic "9"

New MarkMagic™ 9 is more than a collection of updates. New MarkMagic 9 features breakthrough capabilities that give you more forms and report writing power, more flexibility to automate your document processing, more performance enhancements to reduce processing time, and more interface refinements to make designing bar code labels, RFID tags, forms and reports easier than ever before. Even more so than in previous versions, no technical skills are required to produce even more types of sophisticated documents with new MarkMagic 9.

Enhancements in MarkMagic/J Magic 9.5 Since 9.0 MOD LVL 170721

- **(New Pie Chart Field Option)** PCL5 (laser) printer drivers as well as MarkMagic's Adobe PDF option have a new field type that allows the creation of dynamic Pie Charts.



[View Live Demo](#)

- **Color Label Print Driver** - Support for Epson Colorworks® color inkjet label printers has been added. Look for the new EPC7500G printer device in the MarkMagic driver list when creating your new format.
- **"Other" Field Type** - Other fields allow you to create and print shapes including Circles, Ovals and Arcs. This new feature has been added to our HP PCL, Zebra and Datamax drivers. These cool new shapes can have color, shading and styling applied to them allowing you to create some very unique forms and label designs. We can't wait to see how you will use these new Other fields on your formats.

- **Edit Feature for PDF Text Fields** - The ability to create user editable text fields has been added to the MarkMagic PDF driver. These are special fields that will only show on PDF documents and are commonly used to allow users to fill in their own information when they view the PDF.
- **PDF URL Linking** - There is a new option to embed a custom URL link to text, barcode and graphic fields in MarkMagic. When printing to PDF, those fields with embedded URL will be clickable and will redirect the user to the desired website. No longer will you have to "hide" a white URL text field next to whatever field you want to be clickable.
- **Autobag Support** - Great for printing, bagging and sealing in one step! See our [video](#) and contact CYBRA for more information.
- **Lines Types for Laser and PDF** Diagonal lines are now support for PCL5 and PDF output as well as rounded and triangle line end styles

### 3. MARKMAGIC ADD-ON OPTIONS

---

#### Quick Comply RFID Add-On Option

MarkMagic supports encoding "smart" labels containing RFID tags for these seven popular thermal printer types: Monarch, Zebra, Printronix, Intermec, Sato, Datamax, and Avery Dennison. Included is support for both Class 1 and Class 0+ EPC standards as well as the more prominent Class 1, Generation 2, EPC protocol from tag manufactures. MarkMagic RFID Option also supports the complex logic regarding decimal to binary to hex data conversion, so you don't have to. Just pass your System i decimal data and the RFID option will do the rest. Tag password lock/unlock and user defined data can also be defined. Quick Comply RFID lets you quickly and easily meet EPC compliance mandates with built-in item level (SGTIN) serialization. While previous versions of MarkMagic fully supported RFID tag compliance, new MarkMagic accomplishes this in a matter of minutes, rather than hours.

#### PrintTransformer Add-On Option (formerly called PrintManager)

MarkMagic PrintTransformer lets you print fields based on user defined conditions such as printing negative values in red, or hiding a

box field if a carrier class of service does not require a box field to print. Print Transformer makes it easy to define rules at the field level. Text, Bar Code, Line, Box, Graphic, Text Block and RFID field attributes can be defined to conditionally print based on variable data or job attributes. The rule-based option gives you the ability to redirect and modify in-process print jobs without programming. Spool files that meet user-defined criteria are manipulated and printed according to user determined rules. This eliminates programming for virtually all complex forms printing applications. Using intelligent print routing, spool files can be separated and sent to different printers and e-mail addresses based on the data in the spool file. In addition, label file records can cause several labels to be printed on different printers based on the information in the label file. The J Magic PrintTransformer GUI makes defining even the most complex rule easy.

#### Print Monitor Add-On Option

Print Monitor eliminates programming for automatic MarkMagic printing. New spooled files added to a queue or a record added to a database file will trigger a MarkMagic Job to print labels or forms.

#### PDF Email and Fax Add-On Option

Can produce Adobe Acrobat PDF files containing searchable text and readable bar codes. PDF documents can be sent as e-mail attachments.

*FAX: Any format designed using the MarkMagic HPPCL5, HPLJ4P, or AFPDS printer device types can now be faxed directly from the System i. This option requires IBM Facsimile Support for System i (licensed program: 5798FAX) to be installed and functional with a fax profile that has enhanced services enabled. To use the Fax capability, either the SNDMMFAX or PRTLBLF command can be used. (Note: in order to take advantage of MarkMagic's automatic PCL graphic conversion to AFPDS the user must be enrolled in the system directory (WRKDIRE), the source image must in the MarkMagic graphics gallery, and licensed program: 5722AF1, IBM AFP Utilities must be enabled.*

#### Laser Printer 2D Bar Code Add-On Option

Select this option if you need to print UPS Maxicode, PDF417 or DataMatrix 2D bar codes on HP PCL Laser or IBM AFP or IPDS laser printers.

#### FormWeaver Add-On Option

The FormWeaver option enables printing of documents that merge up to 100 formats. An example of merged formats would be a pick ticket or invoice form with a shipping label in the lower left hand corner.

FormWeaver Documents can also consist of two or more different formats, each on a separate page, for each input record. An example of multiple formats per input record would be a printed bill of lading that contains a duplexed back page with special instructions.

#### 4. VERSION HISTORY

---

A complete list of MarkMagic & J Magic enhancements and updates can be found at: <http://cybra.com/markmagic-v9-modification-level-history/>

#### 5. LICENSE INFORMATION

---

The MarkMagic 9 licensing scheme requires that we know your processor group, in addition to the CPU model and serial number. Also we need to know whether MarkMagic will be run in more than one logical partition (LPAR).

Note: A new MarkMagic 9 license code is required for all MarkMagic version upgrades.

The following command will display your Processor Group: WRKLICINF (Work with License Information). Please include the following information in your MarkMagic 9 product key requests:

```
CPU Model ..... 3 Character value
Processor Group ..... P05, P10, P20, P30, P40,P50
CPU Serial # ..... 7 Character value
LPAR# ..... 000 through 999 (unlimited)
```

You will not be able to access your LPAR number if you do not have a previous version of MarkMagic on your system. If this is the case, please let your sales representative know. We will issue you a temporary code with a default LPAR#. After you install MarkMagic you can access your LPAR# with the following command:  
MRKMAG90/SETMMPRM

## 6. MIRRORING INFORMATION OVERVIEW

---

Any System i deemed as a Disaster Recovery or Back Up system must have MarkMagic 9 “installed” on the system and a valid authorization code. Saving objects from Prod system to DR system is not sufficient. Please install from Download before mirroring formats, jobs, graphics, rules, monitors, and conditions from your Prod system.

*Note: The objects listed below are meant as an overview of areas where you need to be careful. This is not intended to be a comprehensive list. Please contact [help@CYBRA.com](mailto:help@CYBRA.com) with any questions.*

- 1) MarkMagic licensing data is saved in LICPRD libraries which correlate to the MM version number (see below examples). Customers should not mirror these libraries.

MM90LICPRD

- 2) MarkMagic DATA Areas, DATAQs, and User Spaces in MRKMAGDTA, MRKMAGXX, and MRKMAGUSRP should not be mirrored.

### Examples:

- Data Area MMPRODKEYS in library MRKMAGXX should not be mirrored.
- Data Queues in MRKMAGDTA Library used to transfer bar code image data should not be mirrored.

Object	Type	Text
GRARCVDTAQ	*DTAQ	Graphics received data queue
GRARQSDTAQ	*DTAQ	Graphics request data queue

- Library MRKMAGUSRP contains several User Spaces and should not be mirrored.

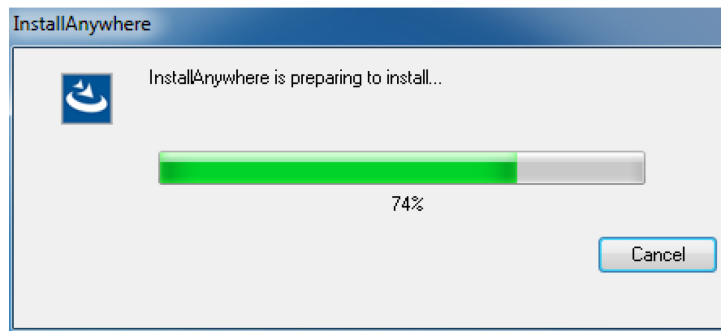
- 3) MarkMagic Objects in Library QGPL should not be mirrored.



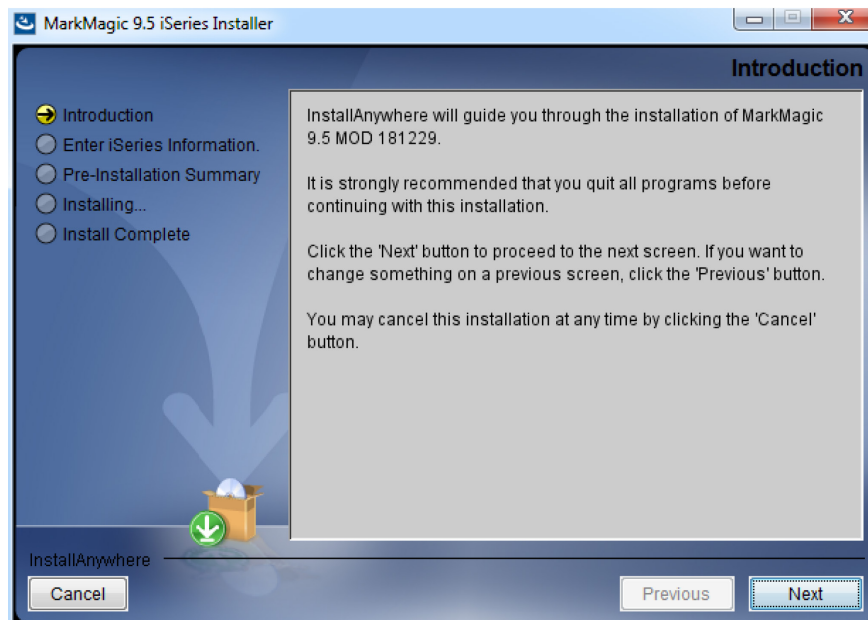
## C. DOWNLOAD INSTRUCTIONS – NEW INSTALLATION

### 1. BEFORE YOU BEGIN

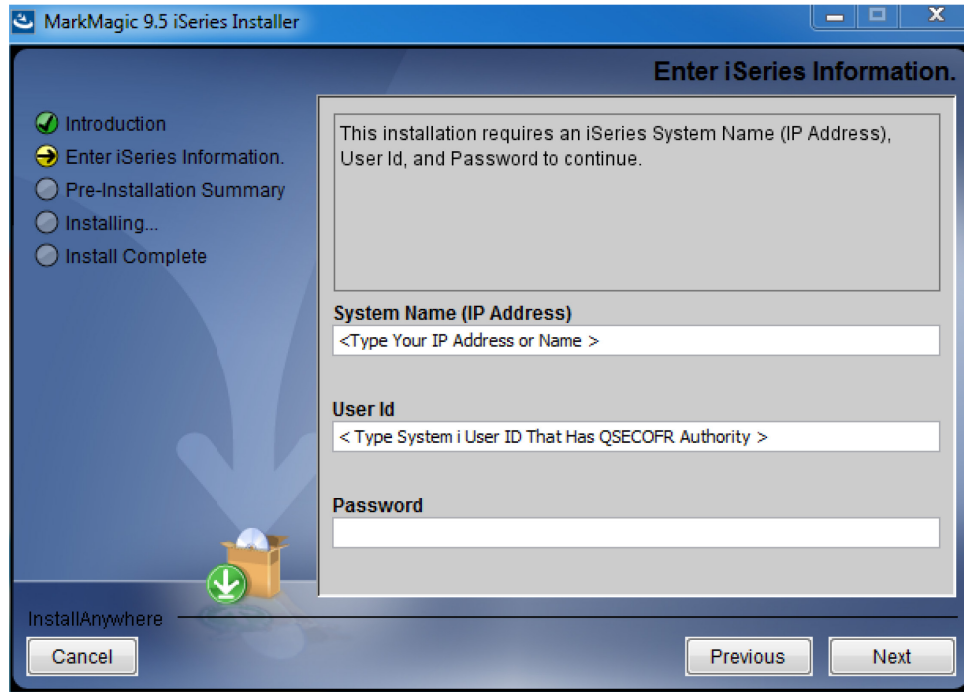
- Click on the appropriate MarkMagic 9 link to download. If you are prompted to open or save the MarkMagic95\_18 12 29.zip file, save it to a temporary directory on your PC.
- Once the download is complete, find the downloaded file and extract the zip file contents. The enclosed file will have an .EXE extension. Double click on the icon to begin the MarkMagic 9 InstallAnywhere installation process.



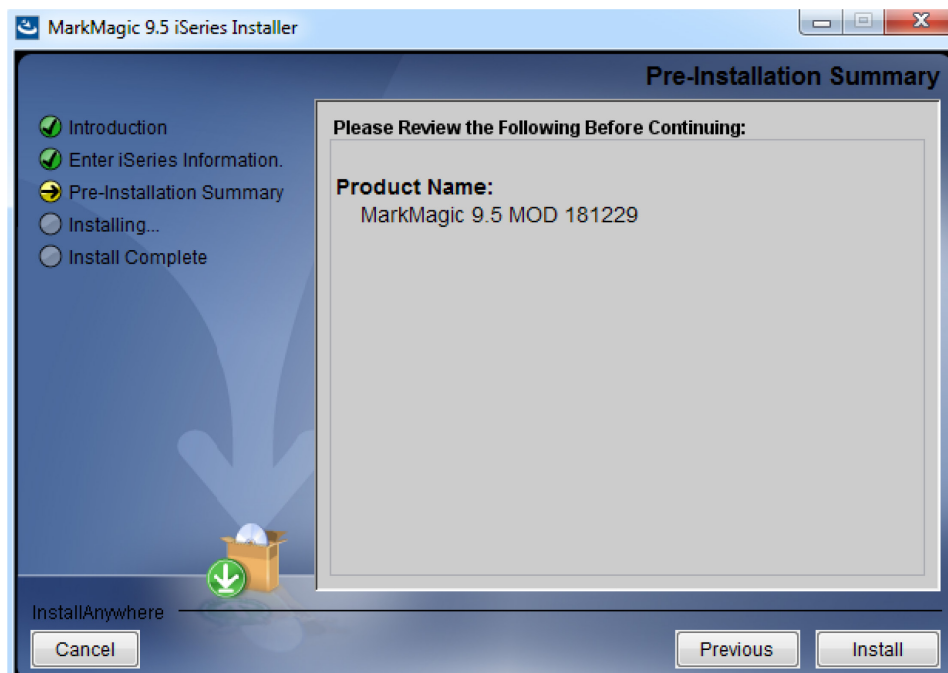
- Make sure any firewalls that you may have installed do not block the install, and also confirm that FTP is configured and running on your System i.
- Follow the MarkMagic 9 installation prompts by clicking "Next"



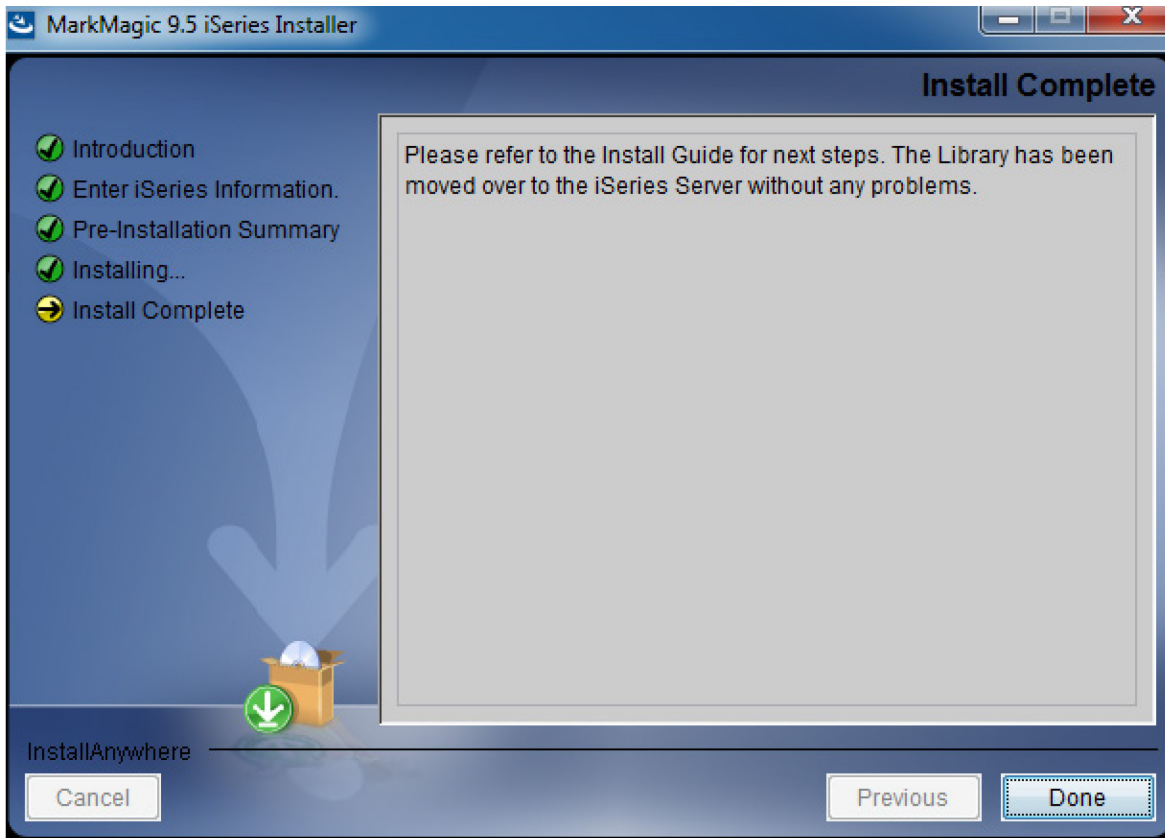
- You will reach the “MarkMagic 9 iSeries Installer” panel. There you enter the name or IP address of the CPU on which you would like to install MarkMagic 9. Also enter your iSeries user id and password (we recommend your ID have QSECOFR authority). Then click “Next”.



- You will be presented with the “Pre-Installation Summary”. Click Install.



- When the MarkMagic 9 process is completed, you will have a library named MM90TEMP on the System i. At this point you can restart your Windows Firewall, if applicable.



## 2. INSTALLATION

Sign on to a new session as QSECOFR, confirm both QTEMP and QGPL are on your library list and then enter the following command:

MM90TEMP/INSTALL.

The first screen that is displayed is a message that you are installing MarkMagic 9, mod 18 12 29. Enter G to continue or C to cancel.

MarkMagic will load automatically and prompt you at various points for information such as your product keys and device types. When the install is complete, you will be prompted to sign off and then sign back on. The entire installation of MarkMagic should take less than 30 minutes.

Towards the end of the installation process, you will see the Set MarkMagic Parameters screen:

```
Set MarkMagic Parameters

Date:  2/19/19      CPU model type:  E4D      Version: 9.5
Time: 17:49:06     CPU serial num: 06AF9AT5   Mod lvl: 181229
                          Processor group: P05
                          Logical partitn: 003

Type choices, press Enter.

Printer device types . . . *ALL_____ F4 for list
                           _____
                           _____
                           _____
                           _____
                           _____
                           _____
                           _____
                           _____
                           _____

More...
F3=Exit  F5=Refresh  F8=Product Keys  F10=Prod Key Detail  F12=Cancel
```

Add any additional device types or \*ALL to test with all available device types.

Press F8 to Set MarkMagic product keys (Call your account manager or CYBRA Sales at 914-963-6600 Option 3 for a MarkMagic 9 rental key).

```

Set MarkMagic Product keys

Date: 2/19/19      CPU model type: E4D      Version: 9.5
Time: 17:47:19    CPU serial num: 06AF9A5   Mod lvl: 181229
                  Processor group: P05
                  Logical partitn: 003

Type choices, press Enter.

Product keys      Expiration      LPAR      Maximum      Maximum
                  (mm/dd/yy)
1. CBCD2 F2A97 AF0F0 17AX1 07 / 15 / 19 3      999999      999999
   _____  _____  _____  _____ 00 / 00 / 00 0      0          0
   _____  _____  _____  _____ 00 / 00 / 00 0      0          0
   _____  _____  _____  _____ 00 / 00 / 00 0      0          0
   _____  _____  _____  _____ 00 / 00 / 00 0      0          0
   _____  _____  _____  _____ 00 / 00 / 00 0      0          0
   _____  _____  _____  _____ 00 / 00 / 00 0      0          0
   _____  _____  _____  _____ 00 / 00 / 00 0      0          0
   _____  _____  _____  _____ 00 / 00 / 00 0      0          0
   _____  _____  _____  _____ 00 / 00 / 00 0      0          0

F3=Exit      F5=Refresh      F8=Work with license information      F12=Cancel

```

The Default 45 day Labels Runtime (Print Only) product key is enabled if no product key is entered.

The rental key you will be given will enable ALL MarkMagic features. Customers who receive permanent keys will require multiple product keys to activate the following MarkMagic 9 optional features:

- Print Monitor Option
- PDF Fax & Email Option
- Laser Printer 2D Option
- RFID Printing Option (Quick Comply)
- FormWeaver Option
- PrintTransformer Option
  - Essentials
- On Demand Option

Once the installation is complete, please sign off your QSECOFR session to close and deallocate any open files. Sign back on and begin using MarkMagic.

### 3. TROUBLESHOOTING

Two MarkMagic Installation Logs are created upon completion of installation. The summary log contains MarkMagic installation comments, while the detail log also includes the full job log. The log's details are:

Spooled Filename: MARKMAGIC User data: INSTALLLOG

In addition, the detail log is written to the following database file:

Library: QGPL File: MMINSLOG

If you have trouble installing MarkMagic 9 we request that you e-mail us the summary log immediately following your installation. If the installation is unsuccessful, there will most likely not be a printed install log. Please send the log file in QGPL to [help@CYBRA.com](mailto:help@CYBRA.com)

## D. DOWNLOAD INSTRUCTIONS - UPGRADE

### 1. BEFORE YOU BEGIN

---

#### UPGRADE NOTES:

- If you upgrade from MarkMagic V7.7 or V8.6 to V9.0, your formats will be available in both versions, in each of your user libraries. Any changes to formats or new formats created after the installation will have to be exported out of one version and imported into the other version.
- Although this situation is unlikely, it is important to understand MarkMagic 9 will upgrade from the most recent MarkMagic version on your system, even if an older version is set as your system default. Example: If both 7.7 (MRKMAG70) and 8.6 (MRKMAG80) are installed and 7.7 is your \*SYSTEM default running your everyday production, MarkMagic will “see” 8.6 and upgrade any formats, jobs, graphics, and monitors found in 8.6. *Note:* renaming or deleting MRKMAG80 in this scenario will not force the upgrade of your 7.7 objects. In other words, the upgrade program does not allow a user to “skip over” a version. Please use the MRKMAG70/WRKMMVSN or MRKMAG80/WRKMMVSN command to help determine if multiple MarkMagic versions are installed and which is the most recent (more WRKMMVSN details can be found later in this section).

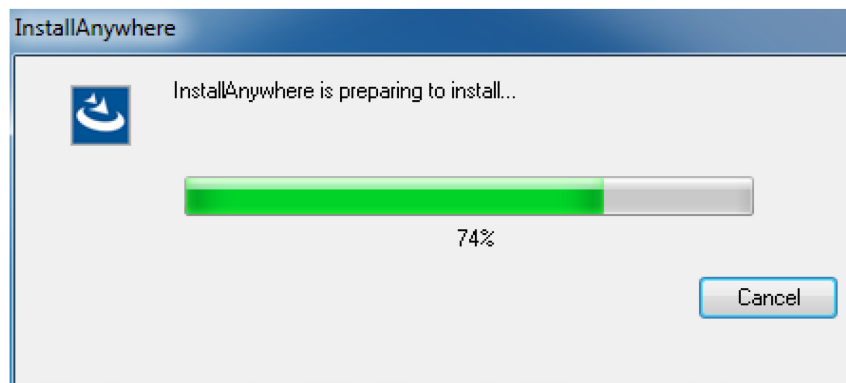
Do not remove or rename the MarkMagic product library MRKMAG70, MRKMAG80, or any MarkMagic User Libraries (MRKMAGDTA, etc.). The installation process will convert your existing formats to the new version.

Before installing your new version, make sure that:

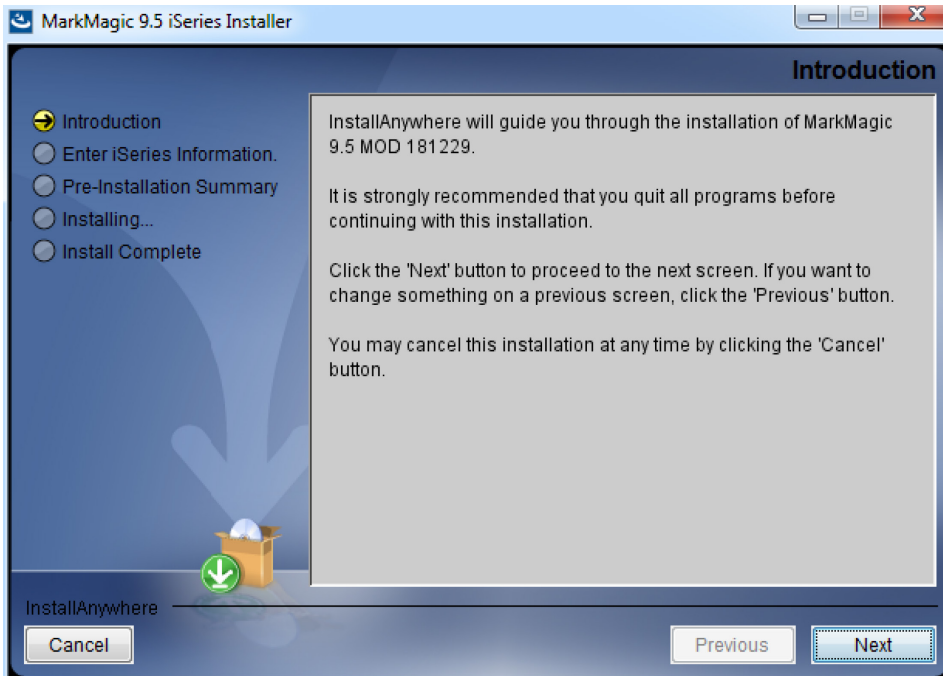
- No one has the MarkMagic library (MRKMAG70 or MRKMAG80) or the MarkMagic User library (MRKMAGDTA) in his or her library list, and also make sure that no one is working with MarkMagic or J Magic. For example, to see if someone is using MarkMagic sign on with SECOFR authority and enter WRKOBJ LCK OBJ (MRKMAGxx) OBJ TYPE(\*LIB). Also, enter the Work with Active Jobs (WRKACTJOB) command on an OS/400 command line. Look at the column “Function” for CMD-STRMRKMAG.
- The MarkMagic library (MRKMAGDTA) is not locked. To see if the MarkMagic User library files are “locked,” enter the Work with Object Locks (WRKOBJ LCK OBJ (DEVPFxx)

OBJTYPE(\*FILE)) command on the AS/400 command line, and press F4. Type DEVPFxx for the object name, MRKMAGDTA for the library, and \*FILE for the object type, and press ENTER. Look at the column "Users" to see who is working with MarkMagic. Ask them to sign off the system in order to release the MarkMagic libraries and files.

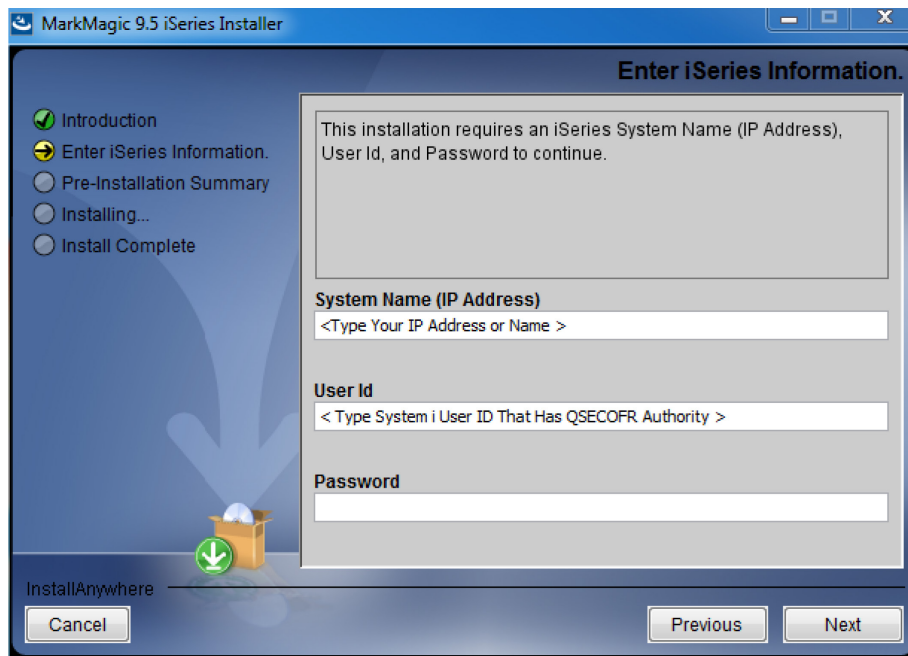
- If you are upgrading from MarkMagic 7 or 8 and using the MarkMagic Monitor Option, please make sure to end your monitor before upgrading. Type: CALL PGM(MRKMAG70/ENDMONPGM) PARM(' '), and press Enter to end the MarkMagic 7 print monitor (use MRKMAG80 to end MarkMagic 8)
  - Note: Remember to Start the MM System Version of the Monitor after an upgrade.
- We recommend that you save your MarkMagic libraries (MRKMAG70, or MRKMAG80, and MRKMAGDTA) and User libraries prior to installation.
- Click on the appropriate MarkMagic 9 link to download. If you are prompted to open or save the MarkMagic95\_18 12 29.zip file, save it to a temporary directory on your PC.
- Once the download is complete, find the downloaded file and extract the zip file contents. The enclosed file will have an .EXE extension. Double click on the icon to begin the MarkMagic 9 InstallAnywhere installation process.



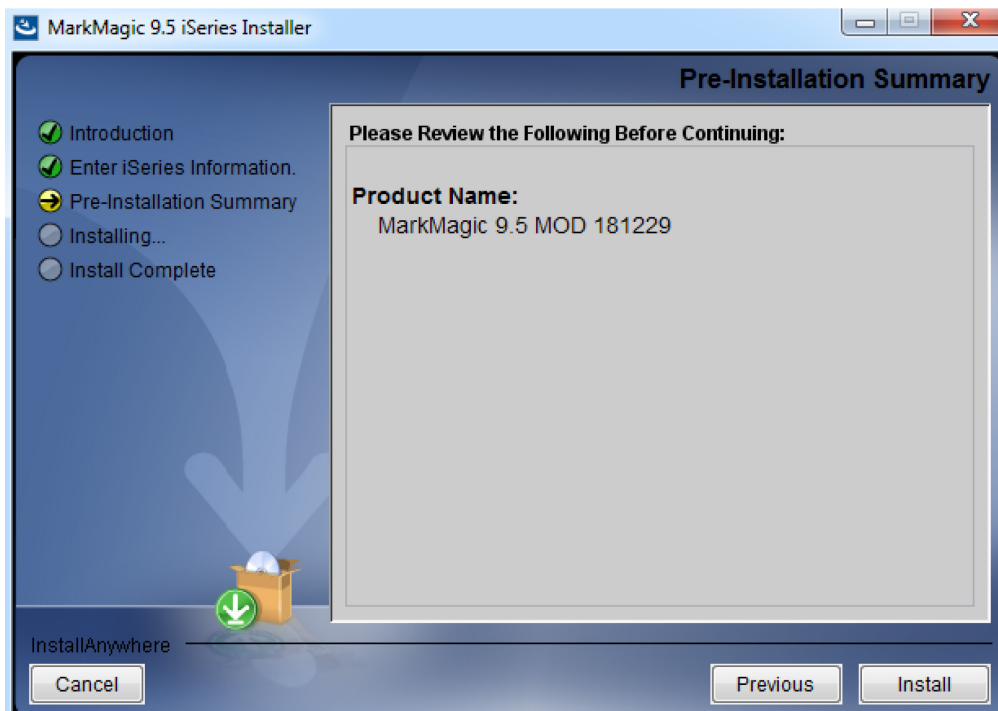
- Make sure any firewalls that you may have installed do not block the install, and also confirm that FTP is configured and running on your System i.
- Follow the MarkMagic 9 installation prompts by clicking "Next"



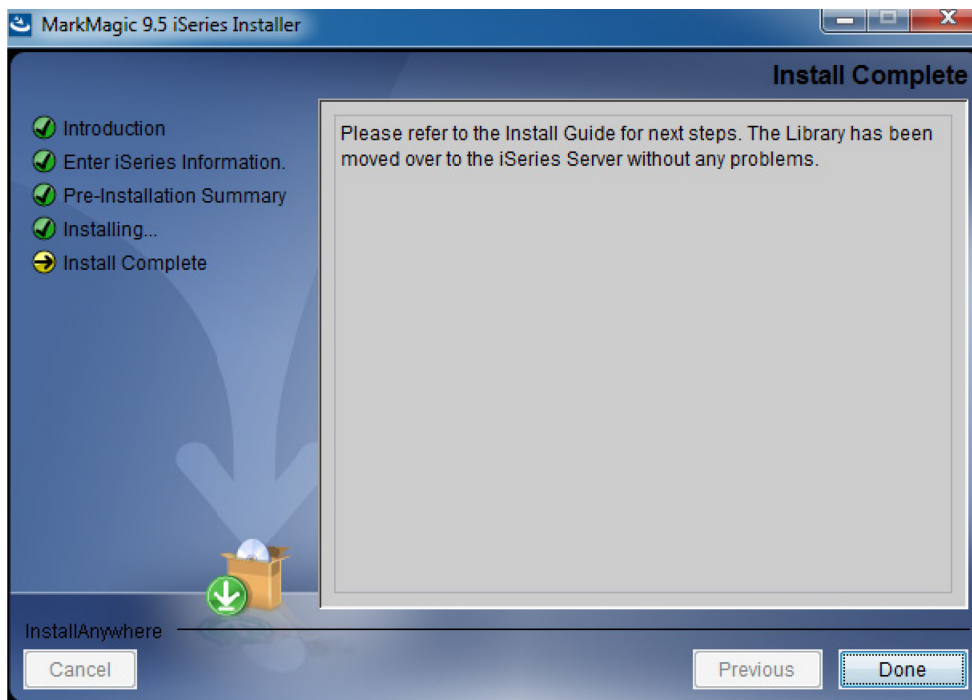
- You will reach the “MarkMagic 9 iSeries Installer” panel. There you enter the name or IP address of the CPU on which you would like to install MarkMagic 9. Also enter your iSeries user id and password (we recommend your ID have QSECOFR authority). Then click “Next”.



- You will be presented with the “Pre-Installation Summary”. Click Install.



- When the MarkMagic 9 process is completed, you will have a library named MM90TEMP on the System i. At this point you can restart your Windows Firewall, if applicable.



## 2. INSTALLATION

---

Sign on to a new session as QSECOFR, confirm both QTEMP and QGPL are on your library list and then enter the following command:

MM90TEMP/INSTALL

If you are upgrading from a previous version, you will get the following message: *MarkMagic is about to be updated from a previous version.* During the upgrade the following messages will be displayed:

- Your existing version of MarkMagic is about to be upgraded. Enter C to cancel or G to continue the upgrade (C G)
- MarkMagic is about to be upgraded from a previous version. Which version should be the system wide default (8.6, 9.0) (We recommend that you choose your current production version and test MarkMagic 9 based off \*SESSION or \*USER version control. Once satisfied with MarkMagic 9, the system version can be changed. See WRKMMVSN and SETMMVSN later in this section for more information on version control.

```

Set MarkMagic Parameters

Date:  2/19/19      CPU model type:  E4D      Version:  9.5
Time: 17:49:06      CPU serial num:  06AF9AT5    Mod lvl: 181229
                  Processor group:  P05
                  Logical partitn: 003

Type choices, press Enter.

Printer device types . . . *ALL          F4 for list
                           _____
                           _____
                           _____
                           _____
                           _____
                           _____
                           _____
                           _____

More...
F3=Exit  F5=Refresh  F8=Product Keys  F10=Prod Key Detail  F12=Cancel

```

Towards the end of the installation process, you will see the Set MarkMagic Parameters screen. Add any additional device types or \*ALL to test with all available device types.

Press F8 to Set MarkMagic product keys (Call your account manager or CYBRA Sales at 914-963-6600 Option 3) for a MarkMagic 9 rental key. The Default 45 day Labels Runtime (Print Only) product key is enabled if no product key is entered.

```

Set MarkMagic Product keys

Date: 2/19/19      CPU model type: E4D      Version: 9.5
Time: 17:47:19    CPU serial num: 06AF9A5    Mod lvl: 181229
                  Processor group: P05
                  Logical partitn: 003

Type choices, press Enter.

Product keys      Expiration      LPAR      Maximum      Maximum
                  (mm/dd/yy)
1. CBCD2 F2A97 AF0F0 17AX1  07 / 15 / 19  3      999999    999999
   _____  _____  _____  _____  _____  _____  _____
   _____  _____  _____  _____  _____  _____  _____
   _____  _____  _____  _____  _____  _____  _____
   _____  _____  _____  _____  _____  _____  _____
   _____  _____  _____  _____  _____  _____  _____
   _____  _____  _____  _____  _____  _____  _____
   _____  _____  _____  _____  _____  _____  _____
   _____  _____  _____  _____  _____  _____  _____
   _____  _____  _____  _____  _____  _____  _____
   _____  _____  _____  _____  _____  _____  _____

F3=Exit      F5=Refresh      F8=Work with license information      F12=Cancel

```

The rental key you will be given will enable ALL MarkMagic features. Customers who receive permanent keys will require multiple product keys to activate the following MarkMagic 9 optional features:

- Print Monitor Option
- PDF Fax & Email Option
- Laser Printer 2D Option
- RFID Printing Option (Quick Comply)
- FormWeaver Option
- PrintTransformer Option
  - Essentials
- On Demand Option

Once the installation is complete, please sign off your QSECOFR session to close and deallocate any open files. We recommend you sign back on and confirm your default MarkMagic version selection by entering MRKMAG90/WRKMMVSN and checking the "Current System Version" before you begin using your new version.

## SETTING MARKMAGIC VERSIONS:

The Work MarkMagic Version command displays current system and user version settings and is the preferred method to switch the active version based on user and \*SYSTEM. To use this command, type MRKMAG90/WRKMMVSN and press Enter. Note: \*SECOFR authority is required to change other User and system default settings.

The Set MarkMagic Version command is an alternate method to switch the active version based on user, session, or system wide. To use this command, type MRKMAG90/SETMMVSN and press F4. The SETMMVSN command settings are referred to by the system for all non-qualified calls to MarkMagic. Note: \*SECOFR authority is required to change other User and system default settings.

Note:

- SESSION version overrides are controlled by a data area in QTEMP and only work for interactive jobs. Any print job submitted to batch will default back to either the \*SYSTEM or \*USER version override.
- USER version overrides are controlled by a data area in MRKMAGUSRP. \*USER overrides will not be found if a CHGJOB was issued and the user was changed or the user was changed in the SBMJOB command.

When starting MarkMagic via the STRMRKMAG command, you can override the default version. Type STRMRKMAG and press F4. Select a version and press Enter

## TO REVERT TO A PREVIOUS MOD LEVEL:

The installation program does not delete your previous libraries; they are renamed and saved in SAVF format. If, after installation, you wish to revert back to your previous modification level, contact CYBRA Support for assistance in restoring the following saved libraries.

Note: During the MarkMagic 9 upgrade, programs in your older MarkMagic version (MRKMAG70 or MRKMAG80) are replaced with newer programs that allow MarkMagic 8 to run side by side with 7.7 and/or 8.6. A copy of the original MRKMAG70 or MRKMAG80 programs, depending on which version you upgraded from, are saved to a SAVF in the production library (MRKMAG70 or MRKMAG80). The name of the file is MMxxyyyyyy where xx = production library number (70 or 80) and yyyyyy = the version 9 mod level you upgrade to (18 12 29). These older programs can be restored to your live

production library. Please contact [help@CYBRA.com](mailto:help@CYBRA.com) or 914-963-6600 option 4 for assistance.

### 3. TROUBLESHOOTING

---

Two MarkMagic Installation Logs are created upon completion of installation. The summary log contains MarkMagic installation comments, while the detail log also includes the full job log. The log's details are:

Spooled Filename: MARKMAGIC   User data: INSTALLLOG

In addition, the detail log is written to the following database file:

Library: QGPL      File: MMINSLLOG

If you have trouble installing MarkMagic 9 we request that you e-mail us the summary log immediately following your installation. If the installation is unsuccessful, there will most likely not be a printed install log. Please send the log file in QGPL to [help@CYBRA.com](mailto:help@CYBRA.com)

## E. J MAGIC INSTALLATION

### 1. BEFORE YOU BEGIN

---

To load J Magic 9 on *any* PC running Windows7, Windows8 and Windows 10

Minimum Hardware Requirements:

Processor	1.5 GHz Intel Pentium IV, or higher
Display	SVGA, 1152x864 (recommended minimum resolution)
Memory requirements	1 GB RAM
Disk space requirements	150 MB for J Magic 70 MB for Java Virtual Machine

*Note:* To use J Magic 9.5, MarkMagic version 9.5 must be active on the System i.

### 2. INSTALLATION

---

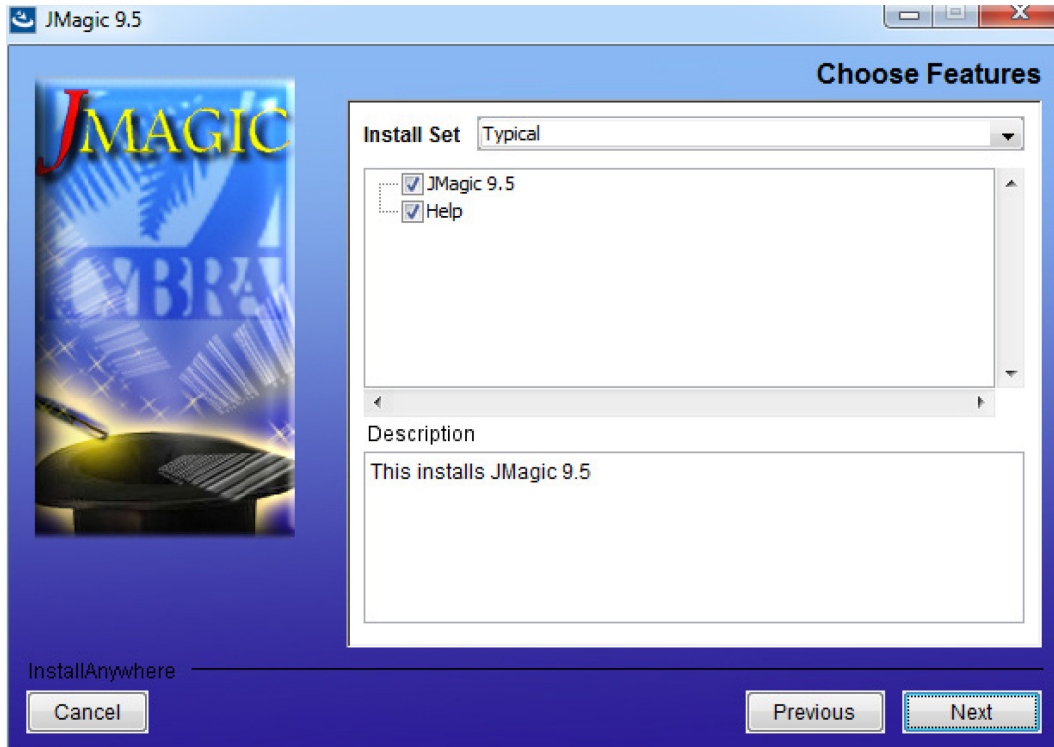
Download J Magic95\_18 12 29.zip from our website and extract the enclosed file to a temporary subdirectory.

Double click the file J Magic95\_18 12 29.exe to launch the J Magic InstallShield Wizard and follow the prompts. We recommend the "Typical" installation which installs both the J Magic9 application and the MarkMagic9 5250 online help.

The wizard will prompt you to select an existing subdirectory, or create a default product destination subdirectory, for example: "*X*":\Program Files\CYBRA Corporation\Jmagic95. (Where "*X*" is your drive letter) as well as the Follow the steps to complete the installation.

Navigate to the Start menu Programs folder then CYBRA Corporation, and then click on the icon "J Magic 9.5" to start J Magic. Sign on to the System i to initiate communications with MarkMagic 9.5.

*Note:* During a Typical J Magic 9.5 installation, 5250 Web Help is automatically installed to C:\Program Files\CYBRA Corporation\Help See section "H" for 5250 Web Help details.



### 3. 5250 Web Help installation

Pressing the F1 key in your 5250 (GreenScreen) session will automatically open your default web browser with the page corresponding to your inquiry.

*Note:* Web Help can be installed on any PC by checking off just the Help option during the J Magic95 setup.exe install.

While we highly recommend installing the 5250 Web Help into the default directory, you are able to change this if needed.

Run the MRKMAG90/SETMMPRM command, and page down once to the second screen. You will be able to change the path to the web help.

Example:

```

                                Set MarkMagic Parameters

Date:  2/19/19          CPU model type:  E4D          Version:  9.5
Time: 17:45:07          CPU serial num:  06AF9A5       Mod lvl: 181229
                                Processor group: P05
                                Logical partiitn: 003

Type choices, press Enter.
Company name . . . . . CYBRA Corporation name

Default menu type . . . . D          D=Design view
                                L=List view

Keep job history . . . . 100          7 - 999 (days)

Keep archived records . : 100          7 - 999 (days)

PC path to MarkMagic Web Help . . : C:\Program Files\CYBRA Corporation\Help
                                p

MarkMagic JVM Subsystem   N
Print Logging On . . . . : N

                                Bottom

F3=Exit    F4=Prompt    F5=Refresh    F12=Cancel

```

Altering the default path with the SETMMPRM command changes this parameter globally, so you will need to make sure the path you set in SETMMPRM matches the path on the user's pc.

MarkMagic Support :  
914-963-6600 Option 4  
• Fax: 716-712-0666 •  
[help@CYBRA.com](mailto:help@CYBRA.com)



**We identify with success.**