

# MarkMagic 11.0 and JMagic 11.0 Installation Instructions

Version 11 Release 0  
Modification Level: 241101



# MarkMagic

Support : 914-963-6600 Option 4 • Fax: 716-712-0666 •  
[help@CYBRA.com](mailto:help@CYBRA.com)



**We identify with success.**

A.	INSTALLATION NOTES .....	- 3 -
B.	INTRODUCTION TO MARKMAGIC 11.0 .....	- 4 -
1.	INSTALLATION TERMS.....	- 4 -
2.	MARKMAGIC ADD-ON OPTIONS .....	- 5 -
3.	VERSION HISTORY .....	- 6 -
4.	LICENSE INFORMATION .....	- 7 -
5.	MIRRORING INFORMATION OVERVIEW.....	- 8 -
C.	DOWNLOAD INSTRUCTIONS - NEW INSTALLATION .....	- 9 -
1.	INSTALLATION PART 1: UPLOADING THE MM11TEMP LIBRARY .....	- 9 -
2.	INSTALLATION.....	- 12 -
3.	TROUBLESHOOTING .....	- 14 -
D.	DOWNLOAD INSTRUCTIONS - UPGRADE .....	- 15 -
1.	BEFORE YOU BEGIN .....	- 15 -
2.	INSTALLATION PART 1: UPLOADING THE MM11TEMP LIBRARY .....	- 17 -
3.	INSTALLATION.....	- 20 -
4.	SETTING MARKMAGIC VERSIONS (VERSION CONTROL) .....	- 23 -
5.	TROUBLESHOOTING .....	- 24 -
E.	JMAGIC INSTALLATION .....	- 25 -
1.	BEFORE YOU BEGIN .....	- 25 -
2.	INSTALLATION.....	- 25 -

**USERS UPGRADING FROM A PREVIOUS VERSION OF MARKMAGIC  
PLEASE READ BEFORE UPGRADING TO MARKMAGIC 11.0**

MarkMagic version 11.0 supports upgrading only from version 9.5 or 10.0. If MarkMagic 9.0 or earlier is detected, the version 11.0 installation will automatically cancel.

MarkMagic v9.0 users must upgrade to v9.5 before upgrading to 11.0. Please visit [cybra.com](http://cybra.com) to find the MarkMagic version 9.5 download and install documentation.

Users running v8.6 or earlier, please contact [help@cybra.com](mailto:help@cybra.com) for information about upgrading to version 11.0.

Although not required to perform a successful v11.0 upgrade, CYBRA does strongly encourage v9.5 users as well as v10.0 users to be on the latest mod levels of these versions before upgrading. (Mod levels 200115 for v9.5 and 230831 for v10.0.) Note that once v11.0 is present on a system, it is not possible to receive updates/patches for previous versions of MarkMagic that were not at their latest mod level prior to upgrading to v11.0.

## A. INSTALLATION NOTES

- To determine if you have a previous version of MarkMagic on your system, run the command: **STRMRKMAG**. The version and mod level will be listed at the top. Please refer to the notes on the pervious page to determine your proper upgrade path.
- MarkMagic 11.0 is compatible with IBM's operating system version V7R3M0 and above. To determine your IBM OS version, run the command: **DSPPTF**. If your system is using an older OS level (V7R2M0 or below), please contact [help@cybra.com](mailto:help@cybra.com) to determine the best MarkMagic version that can be successfully installed on your system's OS version.
- MarkMagic 11.0 requires IBM licensed programs PASE "Portable App Solutions Environment" as well as **Java SE 8** as a minimum Java version.
- A MarkMagic installation cannot be performed if an independent auxiliary storage pool (iASP) is accessible. Tip: Remove all independent ASPs from your job by issuing the SETASPGRP (Set ASP Group) command and specify \*NONE for the ASP Group parameter.

## B. INTRODUCTION TO MARKMAGIC 11.0

MarkMagic installation files and documentation are available via download from CYBRA's website [www.CYBRA.com](http://www.CYBRA.com)

### 1. INSTALLATION TERMS

---

**Install** – An Install is a fresh installation of MarkMagic 11.0 where there is no previous installation of MarkMagic present on the system.

**Upgrade** – An Upgrade is a move from one MarkMagic version to another. For example, if MarkMagic version 9.5 or 10.0 is present on the system and you wish to upgrade to MarkMagic 11.0.

**Mod level update** – A mod level update is a move from one mod level (or mod lvl) to a later modification level within the *same* version of MarkMagic.

## 2. MARKMAGIC ADD-ON OPTIONS

---

### Quick Comply RFID Add-On Option

MarkMagic supports encoding “smart” labels containing RFID tags for these seven popular thermal printer types: Monarch, Zebra, Printronix, Intermec, Sato, Datamax, and Avery Dennison. Included is support for both Class 1 and Class 0+ EPC standards as well as the more prominent Class 1, Generation 2, EPC protocol from tag manufactures. MarkMagic RFID Option also supports the complex logic regarding decimal to binary to hex data conversion, so you don’t have to. Just pass your System i decimal data and the RFID option will do the rest. Tag password lock/unlock and user defined data can also be defined. Quick Comply RFID lets you quickly and easily meet EPC compliance mandates with built-in item level (SGTIN) serialization. While previous versions of MarkMagic fully supported RFID tag compliance, new MarkMagic accomplishes this in a matter of minutes, rather than hours.

### PrintTransformer Add-On Option

MarkMagic PrintTransformer lets you print fields based on user defined conditions such as printing negative values in red, or hiding a box field if a carrier class of service does not require a box field to print. Print Transformer makes it easy to define rules at the field level. Text, Bar Code, Line, Box, Graphic, Text Block and RFID field attributes can be defined to conditionally print based on variable data or job attributes. The rule-based option gives you the ability to redirect and modify in-process print jobs without programming. Spool files that meet user-defined criteria are manipulated and printed according to user determined rules. This eliminates programming for virtually all complex forms printing applications. Using intelligent print routing, spool files can be separated and sent to different printers and e-mail addresses based on the data in the spool file. In addition, label file records can cause several labels to be printed on different printers based on the information in the label file. The JMagic PrintTransformer GUI makes defining even the most complex rule easy.

### Print Monitor Add-On Option

Print Monitor eliminates programming for automatic MarkMagic printing. New spooled files added to a queue or a record added to a database file will trigger a MarkMagic Job to print labels or forms.

### PDF Email and Fax Add-On Option

Can produce Adobe Acrobat PDF files containing searchable text and readable bar codes. PDF documents can be sent as e-mail attachments.

*FAX: Any format designed using the MarkMagic HPPCL5, HPLJ4P, or AFPDS printer device types can now be faxed directly from the System i. This option requires IBM Facsimile Support for System i (licensed program: 5798FAX) to be installed and functional with a fax profile that has enhanced services enabled. To use the Fax capability, either the SNDMMFAX or PRTLBLF command can be used. (Note: in order to take advantage of MarkMagic's automatic PCL graphic conversion to AFPDS the user must be enrolled in the system directory (WRKDIRE), the source image must be in the MarkMagic graphics gallery, and licensed program: 5722AF1, IBM AFP Utilities must be enabled.*

#### **Laser Printer 2D Bar Code Add-On Option**

Select this option if you need to print UPS Maxicode, PDF417 or DataMatrix 2D bar codes on HP PCL Laser or IBM AFP or IPDS laser printers.

#### **FormWeaver Add-On Option**

The FormWeaver option enables printing of documents that merge up to 100 formats. An example of merged formats would be a pick ticket or invoice form with a shipping label in the lower left hand corner. FormWeaver Documents can also consist of two or more different formats, each on a separate page, for each input record. An example of multiple formats per input record would be a printed bill of lading that contains a duplexed back page with special instructions.

### **3. VERSION HISTORY**

---

A complete list of MarkMagic & JMagic enhancements and updates can be found at:

<https://cybra.com/markmagic/v11-modification-level-history/>

#### 4. LICENSE INFORMATION

---

The MarkMagic 11.0 licensing scheme requires that CYBRA knows your Processor Group, in addition to the CPU Model and Serial number. Also, CYBRA will need to know whether MarkMagic will be run on more than one logical partition or LPAR.

Note: A new MarkMagic 11.0 license code is required for all MarkMagic version upgrades.

The following command will display your Processor Group: **WRKLICINF** (Work with License Information). Please include the following information in your MarkMagic 10 product key requests:

CPU Model:	3 Character value
Processor Group:	P05, P10, P20, P30, P40, P50, etc.
CPU Serial #:	7 Character value
LPAR#:	Typically, a 3 digit number

If you are unable to determine your LPAR number, please let your sales representative know. We will issue you a temporary code with a default LPAR#. After you install MarkMagic you can determine your LPAR# by running the following command:

**MRKMAG110/SETMMPRM**

## 5. MIRRORING INFORMATION OVERVIEW

---

Any System i deemed as a Disaster Recovery or Back Up system must first have MarkMagic 11.0 “installed” on the system and a valid authorization code. Simply moving or saving MarkMagic library objects from one system to another is not sufficient. Please perform an actual install of MarkMagic before mirroring formats, jobs, graphics, rules, monitors, and conditions from your main system.

*Note: The objects listed below are meant as an overview of areas where you need to be careful. This is not intended to be a comprehensive list. Please contact [help@CYBRA.com](mailto:help@CYBRA.com) with any additional questions regarding mirroring.*

- 1) MarkMagic licensing data is saved in ‘LICPRD’ libraries which correlate to the MM version number (see below examples). Customers should not mirror these libraries.

```
MM95LICPRD
MM100LICPR
MM110LICPR
```

- 2) MarkMagic DATA Areas, DATAQs, and User Spaces in MRKMAGDTA, MRKMAG##, and MRKMAGUSRP should not be mirrored.

Examples:

- Data Area MMPRODKEYS in library MRKMAG## should not be mirrored.
  - Data Queue \*DTAQ objects in MRKMAGDTA Library used to transfer bar code image data should not be mirrored.
- 3) Library MRKMAGUSRP contains several Data Areas and User Spaces that should not be mirrored.
  - 4) MarkMagic \*CMD objects in library QGPL should not be mirrored.
  - 5) MarkMagic \*JRNRCV and \*JRN journal objects in library MRKMAGDTA should not be mirrored.

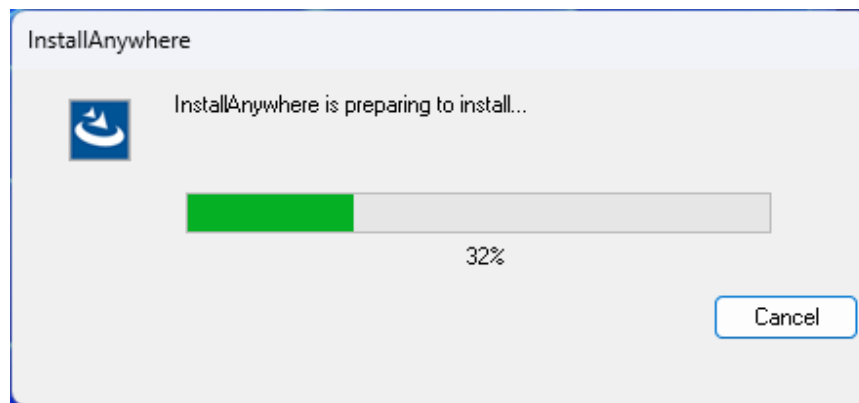


## C. DOWNLOAD INSTRUCTIONS - NEW INSTALLATION

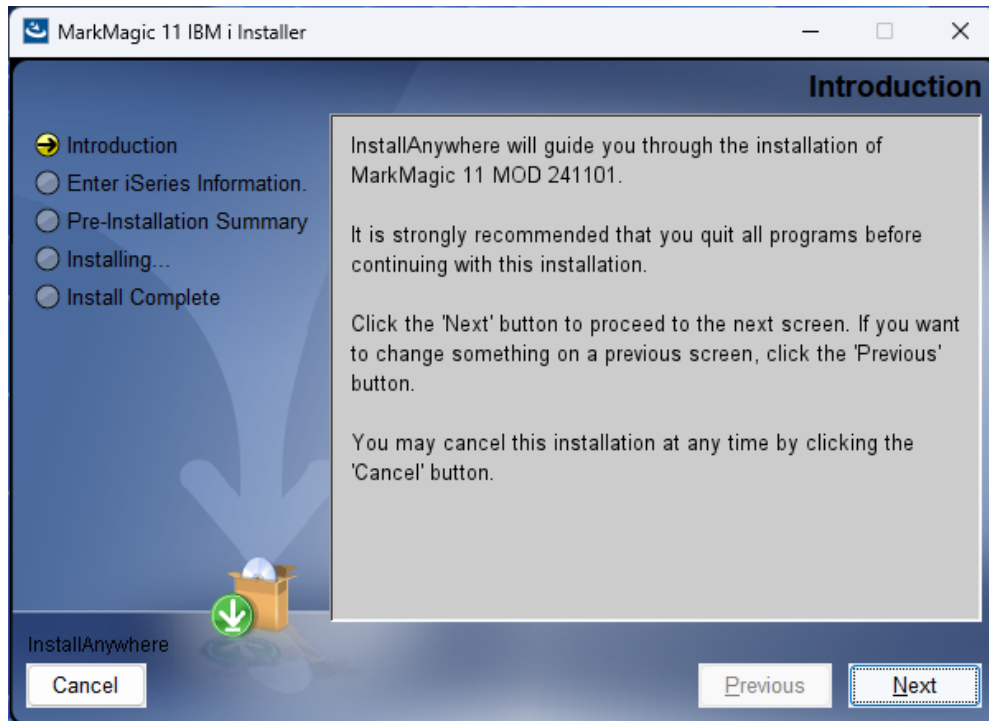
### 1. INSTALLATION PART 1: UPLOADING THE MM11TEMP LIBRARY

---

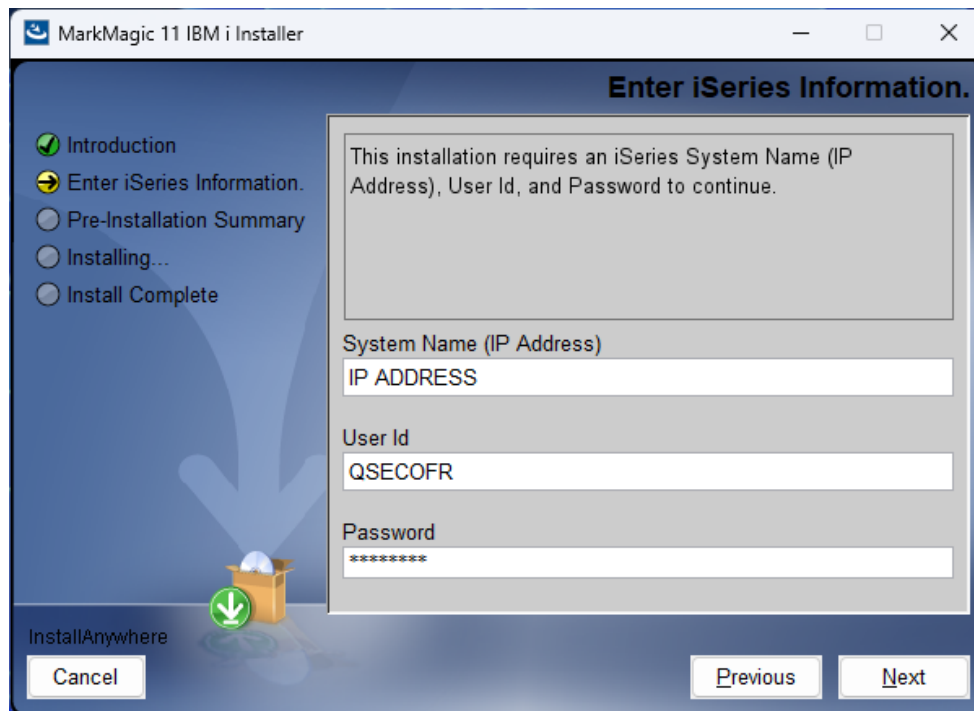
- Click on the appropriate MarkMagic 11.0 link to download. If you are prompted to open or save the MarkMagic11\_241101.zip file, save it to a temporary directory on your PC.
- Once the download is complete, find the downloaded file and extract the zip file contents. The enclosed file will have an .EXE extension. Double click on the icon to begin the MarkMagic 10 InstallAnywhere installation process.



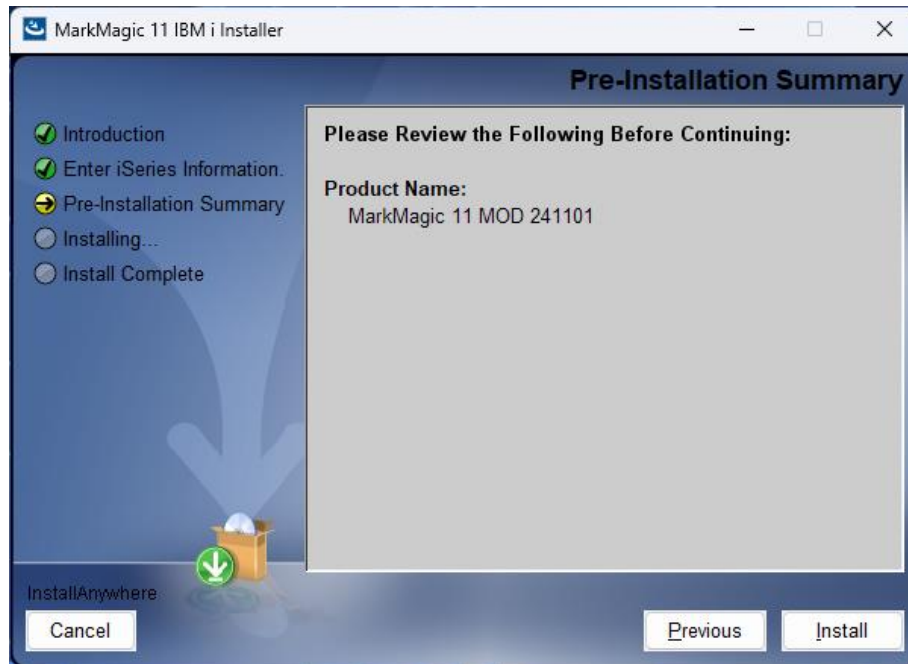
- Make sure any firewalls that you may have installed on your PC or the IBM server are not blocking communication for the InstallAnywhere process.
- FTP must be configured and running on your IBM Systemi server.
- Follow the MarkMagic 11.0 installation prompts by clicking "Next".



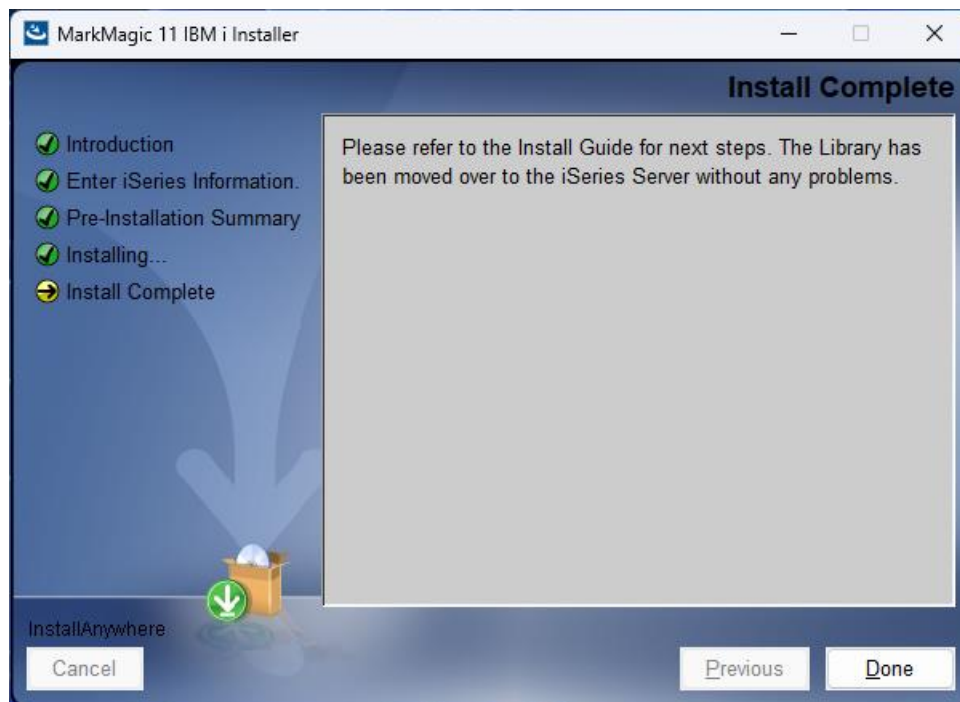
- You will reach the “MarkMagic 11.0 IBM i Installer” panel. There you enter the name or IP address of the CPU on which you would like to install MarkMagic 11.0. Also enter your iSeries user id and password. CYBRA recommends the ID be QSECOFR or one with similar authority.



- After clicking “Next”, you will be presented with the “Pre-Installation Summary”. Click Install.



- Clicking “Install” on this part of the MarkMagic 11.0 installation process simply uploads a library named MM11TEMP to the Systemi. You may now proceed to section 2 to perform the actual installation of MarkMagic 11.0 on your server.



## 2. INSTALLATION

Sign on to a new session as **QSECOFR**, confirm both QTEMP and QGPL are on your library list and then enter the following command:

### MM11TEMP/INSTALL

The first screen that is displayed is a message that you are installing MarkMagic 11.0, mod 241101. Enter G to continue or C to cancel.

MarkMagic will install automatically and prompt you at various points for information such as your product keys and device types. When the installation is complete, you will be prompted to sign off and then sign back on. The entire installation of MarkMagic should take less than 30 minutes.

Towards the end of the installation process, you will see the Set MarkMagic Parameters screen:

```

Set MarkMagic Parameters

Date: 11/04/24      CPU model type: 41A      Version: 11.0
Time: 10:09:26     CPU serial num: 7892C60  Mod lvl: 241101
                   Processor group: P05
                   Logical partitn: 003

Type choices, press Enter.

Printer device types . . . *ALL          F4 for list
_____
_____
_____
_____
_____
_____
_____
_____
_____

More . . .
F3=Exit   F5=Refresh   F8=Product Keys   F10=Prod Key Detail   F12=Cancel

```

Add any additional device types or **\*ALL** to test with all available device types.

**Press F8 to Set MarkMagic product keys** (Call your account manager or CYBRA Sales at 914-963-6600 Option 3 for a MarkMagic 11.0 temporary key).

```

Set MarkMagic Product keys

Date: 11/04/24      CPU model type: 41A      Version: 11.0
Time: 10:10:03     CPU serial num: 7892C60    Mod lvl: 241101
                   Processor group: P05
                   Logical partitn: 003

Type choices, press Enter.

Product keys      Expiration      Maximum      Maximum
                  (mm/dd/yy)      LPAR         Users       Printers
-----
00 / 00 / 00     0               0            0
00 / 00 / 00     0               0            0
00 / 00 / 00     0               0            0
00 / 00 / 00     0               0            0
00 / 00 / 00     0               0            0
00 / 00 / 00     0               0            0
00 / 00 / 00     0               0            0
00 / 00 / 00     0               0            0
00 / 00 / 00     0               0            0
00 / 00 / 00     0               0            0
00 / 00 / 00     0               0            0

F3=Exit      F5=Refresh      F8=Work with license information      F12=Cancel

```

The Default 45-day Labels Runtime (Print Only) product key is enabled if no product key is entered.

The rental key you will be given will enable ALL MarkMagic features. Customers who receive permanent keys will require multiple product keys to activate the following MarkMagic 11.0 optional features:

- Print Monitor Option
- PDF Fax & Email Option
- Laser Printer 2D Option
- RFID Printing Option (Quick Comply)
- FormWeaver Option
- PrintTransformer Option
  - Essentials
- On Demand Option

Once the installation is complete, there will be two break messages presented to the user. The first indicates that the installation is complete. Press Enter to bypass that message. Another break message will display informing the user to immediately sign off the session after pressing G to close the message. After signing off, the MarkMagic installation process is complete!

### 3. TROUBLESHOOTING

---

Two MarkMagic Installation Logs are created upon completion of installation. The summary log contains MarkMagic installation comments, while the detail log also includes the full job log. The log's details are:

Spooled Filename: MARKMAGIC    User data: INSTALLLOG

In addition, the detail log is written to the following database file:

Library: QGPL        File: MMINSLOG

If you have trouble running MarkMagic 11.0 post install, please email the summary log to [help@cybra.com](mailto:help@cybra.com). If the installation process itself was unsuccessful, there may not be printed install log spooled files. If this is the case, please send the log file stored in MMINSLOG file found in QGPL.

## D. DOWNLOAD INSTRUCTIONS - UPGRADE

### 1. BEFORE YOU BEGIN

---

#### UPGRADE NOTES:

After upgrading from a previous version of MarkMagic, your existing formats will be present in both v11.0 as well as your previous version, within each of your user libraries. Any changes to formats or new ones created after the v11.0 installation must now be exported out of one version and imported into the other version if you wish to keep things mirrored between versions.

Although this situation is unlikely, it is important to understand that MarkMagic 11.0 will upgrade from the most recent MarkMagic version present on your system (even if an older version happens to be set as your system default). For example, if both v9.5 and v10.0 are installed, but v9.5 is still your \*SYSTEM default, the v11.0 install process will “see” v10.0 objects first and only upgrade formats, jobs, graphics, and monitors found in v10.0 up to 11.0.

There is no need to remove or rename existing MarkMagic product libraries (MRKMAG90, MRKMAG100, MRKMAGDTA, etc.) before upgrading to MarkMagic v11.0. The installation process will handle converting your existing versions’ formats to the new version.

Before installing your new version, please make sure that no one is using MarkMagic or JMagic and that no one is printing labels or forms.

Please make sure that all MarkMagic product libraries are free of all locks before upgrading. If any libraries are locked, the upgrade will fail. Use the **WRKOBJLCK** command to check:

- MarkMagic 11.0 program library (if upgrading from v11.0):
  - **WRKOBJLCK OBJ(MRKMAG110) OBJTYPE(\*LIB)**
- MarkMagic 10.0 program library (if upgrading from v10.0):
  - **WRKOBJLCK OBJ(MRKMAG100) OBJTYPE(\*LIB)**
- MarkMagic 9.5 program library (if upgrading from v9.5):
  - **WRKOBJLCK OBJ(MRKMAG90) OBJTYPE(\*LIB)**
- MarkMagic shared default data and user library MRKMAGDTA:
  - **WRKOBJLCK OBJ(MRKMAGDTA) OBJTYPE(\*LIB)**

If you utilize the persistent Java MM\_JVMSRV subsystem feature, please make sure to end the subsystem before upgrading.

Type: **MRKMAG##/ENDMMJVM** and press Enter to end the JVM

subsystem and relevant jobs. Where ## is 90 100 or 110 depending on your current version.

(Note: Remember to start JVM subsystem again in the desired version of MarkMagic after the upgrade.)

If you utilize the MarkMagic PrintMonitor addon option, please make sure to end the MM\_MONITOR subsystem and jobs before upgrading.

Type: **CALL PGM(MRKMAG##/ENDMONPGM) PARM(' ')**, and press Enter to end the MarkMagic print monitor subsystem. Where ## is 90 100 or 110 depending on your current version.

(Note: Remember to start Print Monitor again in the desired version of MarkMagic after the upgrade.)

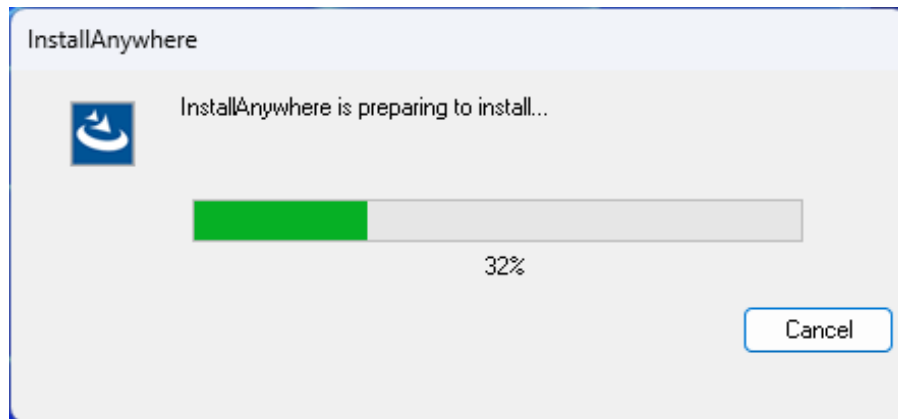
Please make sure to have good backups of your MarkMagic libraries (MRKMAG90, MRKMAG100, MRKMAG110 and MRKMAGDTA) and User libraries prior to installation.



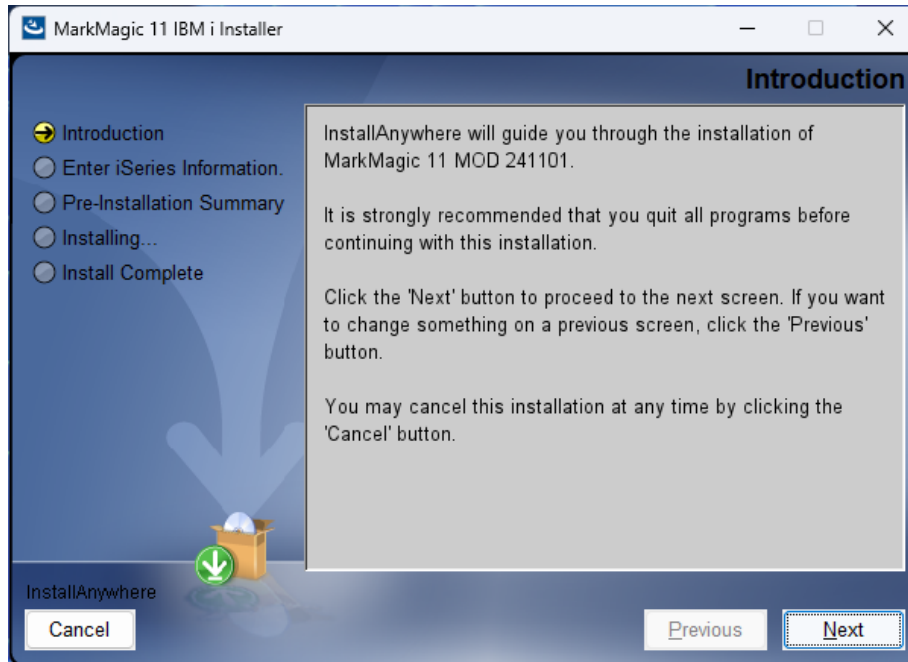
## 2. INSTALLATION PART 1: UPLOADING THE MM11TEMP LIBRARY

---

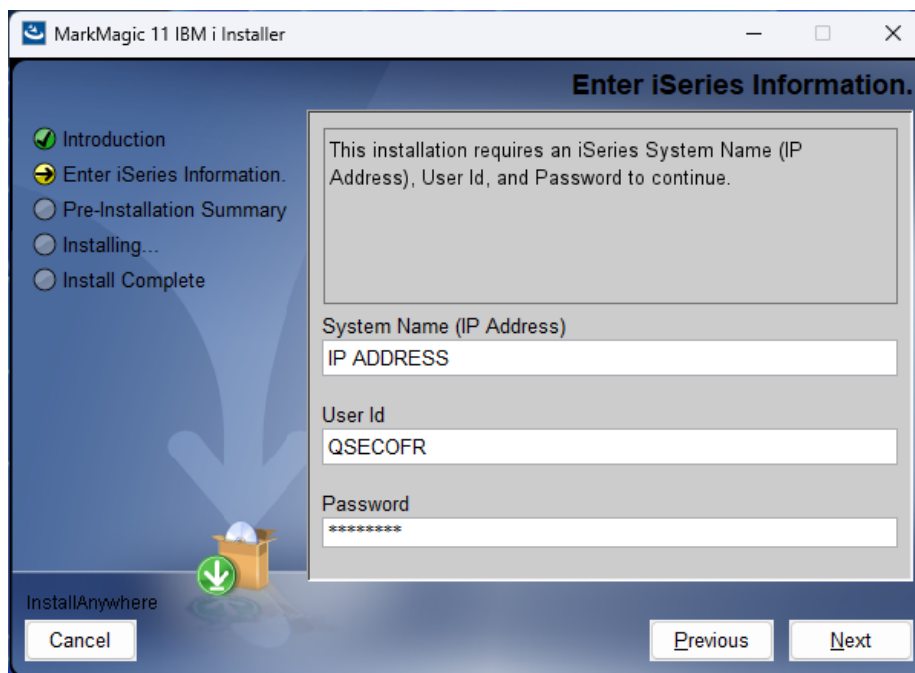
- Click on the appropriate MarkMagic 11.0 link to download. If you are prompted to open or save the MarkMagic11\_241101.zip file, save it to a temporary directory on your PC.
- Once the download is complete, find the downloaded file and extract the zip file contents. The enclosed file will have an .EXE extension. Double click on the icon to begin the MarkMagic 10 InstallAnywhere installation process.



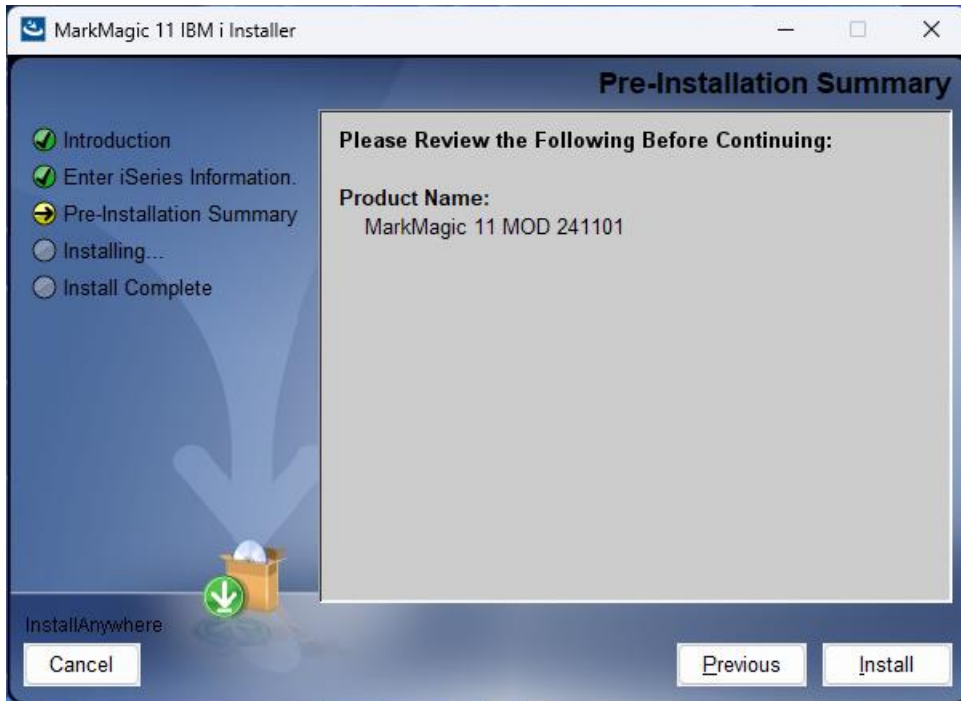
- Make sure any firewalls that you may have installed on your PC or the IBM server are not blocking communication for the InstallAnywhere process.
- FTP must be configured and running on your IBM Systemi server.
- Follow the MarkMagic 11.0 installation prompts by clicking "Next".



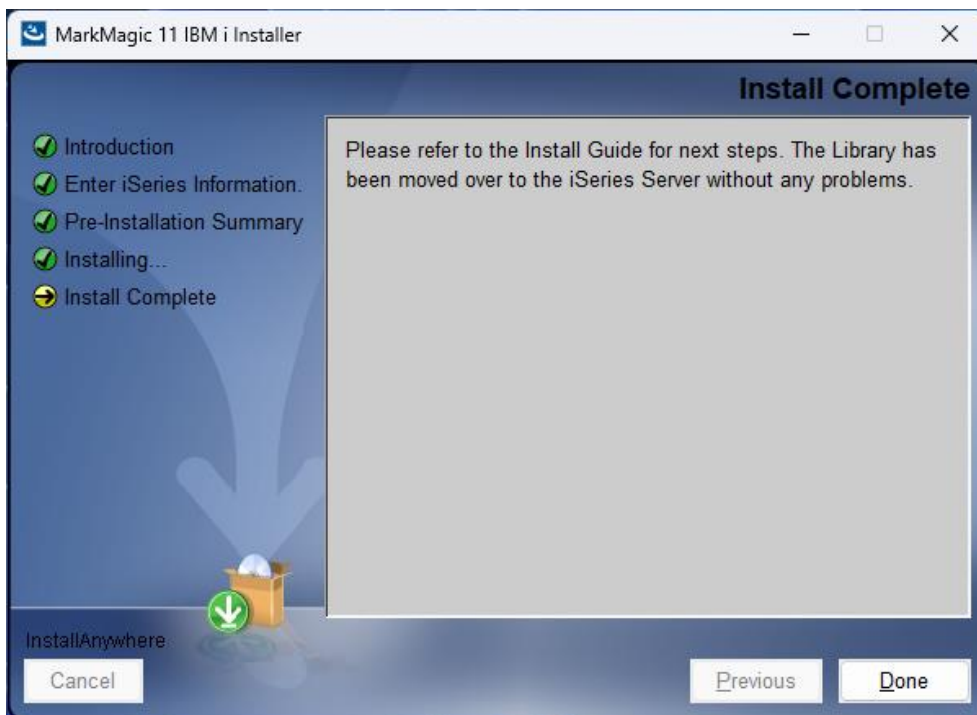
- You will reach the “MarkMagic 11 IBM i Installer” panel. There you enter the name or IP address of the CPU on which you would like to install MarkMagic 11. Also enter your iSeries user id and password. CYBRA recommends the ID be QSECOFR or one with similar authority.



- After clicking “Next”, you will be presented with the “Pre-Installation Summary”. Click Install.



- Clicking “Install” on this part of the MarkMagic 11.0 installation process simply uploads a library named MM11TEMP to the Systemi. You may now proceed to section 2 to perform the actual installation of MarkMagic 11.0 on your server.



### 3. INSTALLATION

---

Sign on to a new session as **QSECOFR**, confirm both **QTEMP** and **QGPL** are on your library list and then enter the following command:

#### **MM11TEMP/INSTALL**

When upgrading from a previous MarkMagic version, you will receive the following message: *MarkMagic is about to be updated from a previous version.* During the upgrade the following messages will be displayed:

- Your existing version of MarkMagic is about to be upgraded. Enter C to cancel or G to continue the upgrade (C G)
- MarkMagic is about to be upgraded from a previous version. Which version should be the system wide default (10.0, 11.0)

CYBRA recommends that you choose your current production version and test MarkMagic 11.0 based off \*SESSION or \*USER version control. Once satisfied with MarkMagic 11, the system version can be changed. See WRKMMVSN and SETMMVSN later in this section for more information on version control.

MarkMagic will install automatically and prompt you at various points for information such as your product keys and device types. When the installation is complete, you will be prompted to sign off and then sign back on. The entire installation of MarkMagic should take less than 30 minutes.

Towards the end of the installation process, you will see the Set MarkMagic Parameters screen:

```
Set MarkMagic Parameters

Date: 11/04/24      CPU model type: 41A      Version: 11.0
Time: 10:09:26     CPU serial num: 7892C60  Mod lvl: 241101
                   Processor group: P05
                   Logical partitn: 003

Type choices, press Enter.

Printer device types . . . *ALL          F4 for list
                           _____
                           _____
                           _____
                           _____
                           _____
                           _____
                           _____
                           _____
                           _____
                           _____

More...
F3=Exit  F5=Refresh  F8=Product Keys  F10=Prod Key Detail  F12=Cancel
```

Add any additional device types or **\*ALL** to test with all available device types.

**Press F8 to Set MarkMagic product keys** (Call your account manager or CYBRA Sales at 914-963-6600 Option 3 for a MarkMagic 11.0 temporary key).

```

Set MarkMagic Product keys

Date: 11/04/24      CPU model type: 41A      Version: 11.0
Time: 10:10:03     CPU serial num: 7892C60    Mod lvl: 241101
                   Processor group: P05
                   Logical partitn: 003

Type choices, press Enter.

Product keys      Expiration      LPAR      Maximum      Maximum
                  (mm/dd/yy)
                  _____
_____ _____ _____ 00 / 00 / 00  0          _____ 0
_____ _____ _____ 00 / 00 / 00  0          _____ 0
_____ _____ _____ 00 / 00 / 00  0          _____ 0
_____ _____ _____ 00 / 00 / 00  0          _____ 0
_____ _____ _____ 00 / 00 / 00  0          _____ 0
_____ _____ _____ 00 / 00 / 00  0          _____ 0
_____ _____ _____ 00 / 00 / 00  0          _____ 0
_____ _____ _____ 00 / 00 / 00  0          _____ 0
_____ _____ _____ 00 / 00 / 00  0          _____ 0
_____ _____ _____ 00 / 00 / 00  0          _____ 0

F3=Exit      F5=Refresh      F8=Work with license information      F12=Cancel

```

The Default 45-day Labels Runtime (Print Only) product key is enabled if no product key is entered.

The rental key you will be given will enable ALL MarkMagic features. Customers who receive permanent keys will require multiple product keys to activate the following MarkMagic 11.0 optional features:

- Print Monitor Option
- PDF Fax & Email Option
- Laser Printer 2D Option
- RFID Printing Option (Quick Comply)
- FormWeaver Option
- PrintTransformer Option
  - Essentials
- On Demand Option

Once the installation is complete, there will be two break messages presented to the user. The first indicates that the installation is complete. Press Enter to bypass that message. Another break message will display informing the user to immediately sign off the session after pressing G to close the message. After signing off, the MarkMagic installation process is complete!

#### 4. SETTING MARKMAGIC VERSIONS (VERSION CONTROL)

---

The Work MarkMagic Version command displays current system and user version settings and is the preferred method to switch the active version based on user and \*SYSTEM.

After the upgrade and signing off and then back on, type **MRKMAG110/WRKMMVSN** and press Enter. Note: \*SECOFR authority is required to change other User and system default settings. The default MarkMagic version will be listed at the top. Each user can have their own personal override set within the list. F17 can be used to change the system default version.

The Set MarkMagic Version command is an alternate method to switch the active version based on user, session, or system wide. To use this command, type **MRKMAG110/SETMMVSN** and press F4. The SETMMVSN command settings are referred to by the system for all non-qualified calls to MarkMagic. Note: \*SECOFR authority is required to change other User and system default settings.

**Note:**

- SESSION version overrides are controlled by a data area in QTEMP and only work for interactive jobs. Any print job submitted to batch will default back to either the \*SYSTEM or \*USER version override.
- USER version overrides are controlled by a data area in MRKMAGUSRP. \*USER overrides will not be found if a CHGJOB was issued and the user was changed or the user was changed in the SBMJOB command.

When starting MarkMagic via the STRMRKMAG command, you can override the version that will start. Type STRMRKMAG and press F4. Select a version and press Enter. This only affects the version you interact with in the current display session. It does not permanently change your personal user or system override.

**Note:**

During the MarkMagic 11.0 upgrade, certain \*PGM objects within your older MarkMagic version libraries (MRKMAG90 or MRKMAG100) are replaced with newer programs that assist with version 11.0 coexistence. Copies of the original objects are saved to a SAVF file within the respective library (MRKMAG90 or MRKMAG100).

## 5. TROUBLESHOOTING

---

Two MarkMagic Installation Logs are created upon completion of installation. The summary log contains MarkMagic installation comments, while the detail log also includes the full job log. The log's details are:

Spooled Filename: MARKMAGIC User data: INSTALLLOG

In addition, the detail log is written to the following database file:

Library: QGPL File: MMINSLOG

If you have trouble running MarkMagic 11.0 post install, please email the summary log to [help@cybra.com](mailto:help@cybra.com). If the installation process itself was unsuccessful, there may not be printed install log spooled files. If this is the case, please send the log file stored in MMINSLOG file found in QGPL.

For any other issues post upgrade, such as reverting to a previous version or uninstalling v11.0, please contact [help@cybra.com](mailto:help@cybra.com) or 914-963-6600 Option #4.



## E. JMAGIC INSTALLATION

### 1. BEFORE YOU BEGIN

---

Any modern-day PC running Windows 10 or 11 can easily run JMagic v11.0: CYBRA's labels and forms WYSIWYG designer for MarkMagic.

Simply download JMagic 11.0 from CYBRA's website [www.cybra.com](http://www.cybra.com) and run the installation wizard.

### 2. INSTALLATION

---

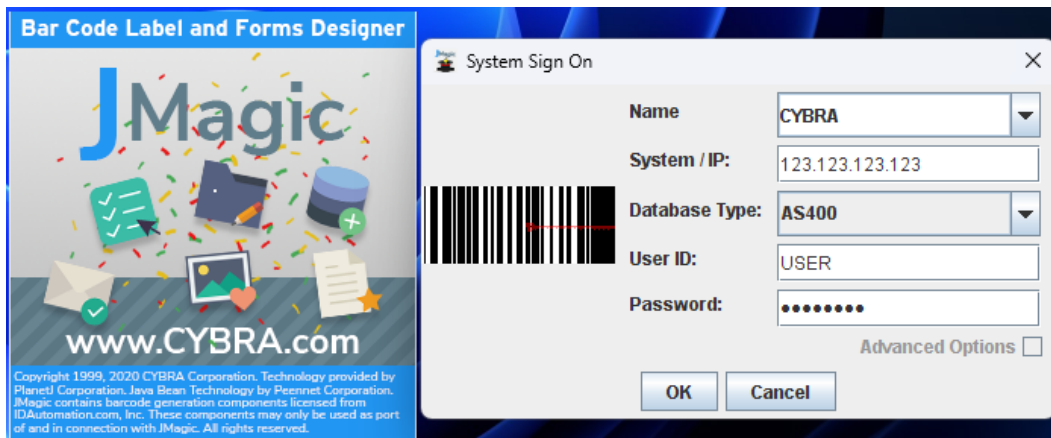
Download JMagic11\_241101.zip from CYBRA's website and extract the enclosed file to a temporary subdirectory.

Double click the file JMagic11\_241101.exe to launch the JMagic InstallShield Wizard and follow the prompts. CYBRA recommends the "Typical" installation which installs the JMagic11.0 application.

The wizard will prompt you to choose a destination folder for JMagic 11.0. By default, this is the "C:\Users\USERID\CYBRA Corporation" folder, but you can change this to anything you want. Click "Next" though each screen and finally click "Install" to finalize the installation.

When running JMagic 11.0 for the first time, you will need to fill in a name for your connection (it can be anything), the IP Address for your AS400 and then your Systemi User ID and Password.

With that information, you should be able to successfully sign on to your MarkMagic 11.0 installation with JMagic 11.0.



MarkMagic Support :  
914-963-6600 Option 4  
• Fax: 716-712-0666 •  
help@CYBRA.com



**We identify with success.**