

# MarkMagic™ 6

Bar Code Labels, RFID Tags, and Forms Software

CYBRASOLUTIONS  
1.800.CYBRA.88 

## Overview

Nobody knows more about System i bar code printing than CYBRA. Whichever printer you choose – from a high volume thermal print and apply machine to a low volume desktop laser – MarkMagic™ 6 supports it. If you need to print labels, forms, or RFID tags, MarkMagic 6 is the right tool to get the job done.



## MarkMagic

The award-winning MarkMagic product family is the easiest and fastest way to create bar code labels and RFID tags, realize the cost savings with electronic forms and integrate additional bar code and RFID technology into any System i application. To print bar code labels on virtually any printer, you need a software package without compromises. You need MarkMagic 6 Bar Code Labels, RFID Tags, and Forms Software for System i.



## MEET THE MARKMAGIC PRODUCT FAMILY

### MarkMagic Label Development Edition

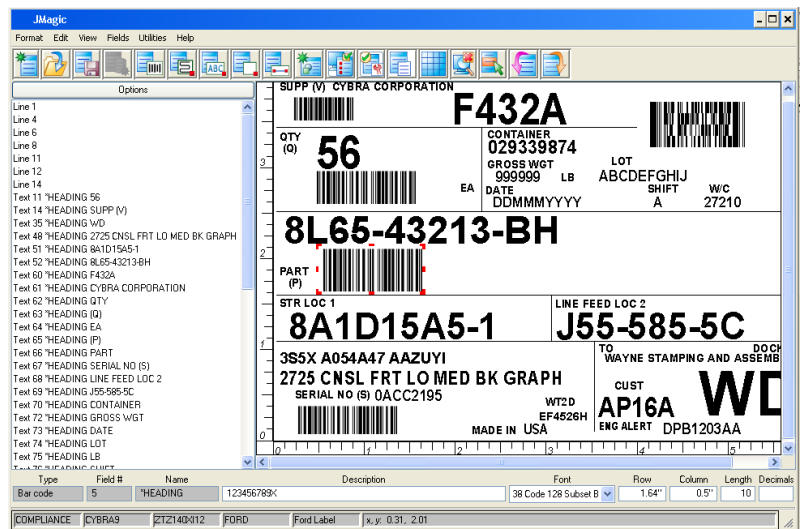
– Do you need to create bar code labels, care labels, and garment hang tags? Take advantage of MarkMagic support for more than 300 different printer types including most thermal tabletop and portable printers, HP-PCL5 and IBM AFP/IPDS laser printers, and specialty printers such as plastic ID card and fabric care label printers.

### MarkMagic Forms Development Edition

– With MarkMagic Forms, you can "map" to existing spooled report files to create electronic, plain paper laser forms. It's easy to relocate, rearrange, remove, and rotate spool file fields, mix different font types and sizes, change text fields to bar code fields, and reformat and edit spooled file data.

**MarkMagic Enterprise Edition** – With MarkMagic 6 Enterprise Edition, you can modify supplied labels, create additional labels, tickets, and tags, AND save money on pre-printed forms with the included MarkMagic 6 Forms Development License.

**Other MarkMagic Products** – MarkMagic "Print Only" Run Time Versions and MarkMagic Mirror Editions (useful for disaster recovery) round out the MarkMagic product family. All MarkMagic products are licensed by CPU and LPAR number.



## DESIGN WITH EASE, WITH JMAGIC

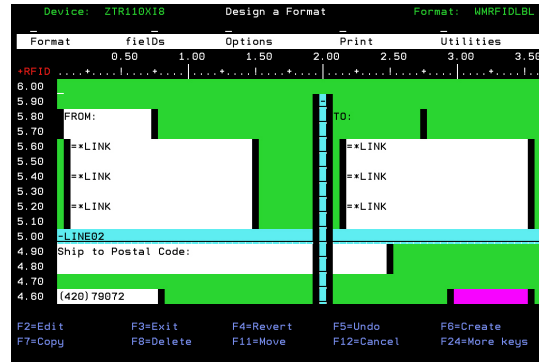
Can you imagine designing labels and forms actually being fun? All MarkMagic development editions feature our exclusive Java-based JMAGIC WYSIWYG Label and Forms Designer. You'll be productive instantly. Working with MarkMagic's elegant WYSIWYG designer is effortless. Picture yourself tracing compliance labels right on the screen. Then, preview your finished label or form right on the screen with your actual data automatically extracted from your application files. You can even map all file fields with one mouse click. When designing a form, all the fields in the file can be mapped and imported into the form with one click of the mouse.

IBM Server *Proven™*

## ⊗ | Features

Only MarkMagic 6 gives you these features in one easy-to-use package:

- > Only MarkMagic supports more than 300 bar code label, forms, and RFID tag printer device types, and gives you unparalleled printing performance and complete control over print options including paper handling, cutting, stacking, and other finishing requirements.
- > Only MarkMagic gives you the choice of four interchangeable design options with the same, easy consistent interface for labels, forms, plastic cards, RFID tags, or any other MarkMagic output type.
- > Only MarkMagic reduces format design time with its unique linking feature. Linked fields can be composed of portions of different fields and can merge information from multiple bar code, data, or text fields. Linked Fields let you print variable data repeated in multiple fields, edit variable data for improved readability, and add a text field (edited) to provide human readable information for any bar code field.
- > Only MarkMagic features effortless application integration. All the programming you need is a one-line call to run a MarkMagic predefined print job. Or use the optional Print Monitor and use NO programming whatsoever.



## YOUR CHOICE OF 5250 INTERFACES

Who said the beloved 5250 screen has to be boring? For the artist in you, the MarkMagic's unique native System i Visual Designer gives you WYSIWYG-like design capability without a PC. For power users, we provide a spreadsheet-like interface in native System i. Imagine being able to change the font type (or any other field setting) of every text field in a format in just 2 keystrokes.

## ⊕ | Benefits

- > No programming knowledge is required to achieve professional results.
- > MarkMagic is designed for real-world IT requirements for testing and production. You do not need a separate system to develop and test. You can run multiple versions of MarkMagic on the same system at the same time.
- > You can mix and match printer types to meet your business requirements.

## ➔ | Recommended Applications

- > UCC.EAN bar code compliance labels
- > EPC Gen 2 RFID carton and pallet tags
- > Garment hang tags and fabric care labels
- > Invoices and statements
- > MICR checks
- > Bills of lading and pick tickets
- > Plastic ID cards, club membership cards and casino player cards
- > FedEx, UPS, and other carrier labels
- > RFID Wristbands



## PROVEN PRODUCTION TOOL

MarkMagic includes the features you need to meet your compliance marking and application integration requirements. MarkMagic is a proven tool for the tough jobs of production volume label, form, and RFID tag printing.

## ⏏ | Add-On Options

- > PDF e-mail and Fax
- > RFID Tag Encoding
- > 2D Bar Codes for Forms
- > FormWeaver enables printing of documents that combine two or more formats on one page, or different formats on different sides of a page.
- > Print Monitor watches output queues for spool files, and watches physical files for added records. Files that meet your criteria can be automatically printed.
- > Print Management gives you the ability to redirect and modify in-process print jobs without programming.



We identify with success.

CYBRA Corporation  
One Executive Blvd.  
Yonkers, NY 10701

T: 914 963 6600  
F: 914 963 6699  
E: info@cybra.com

www.cybra.com